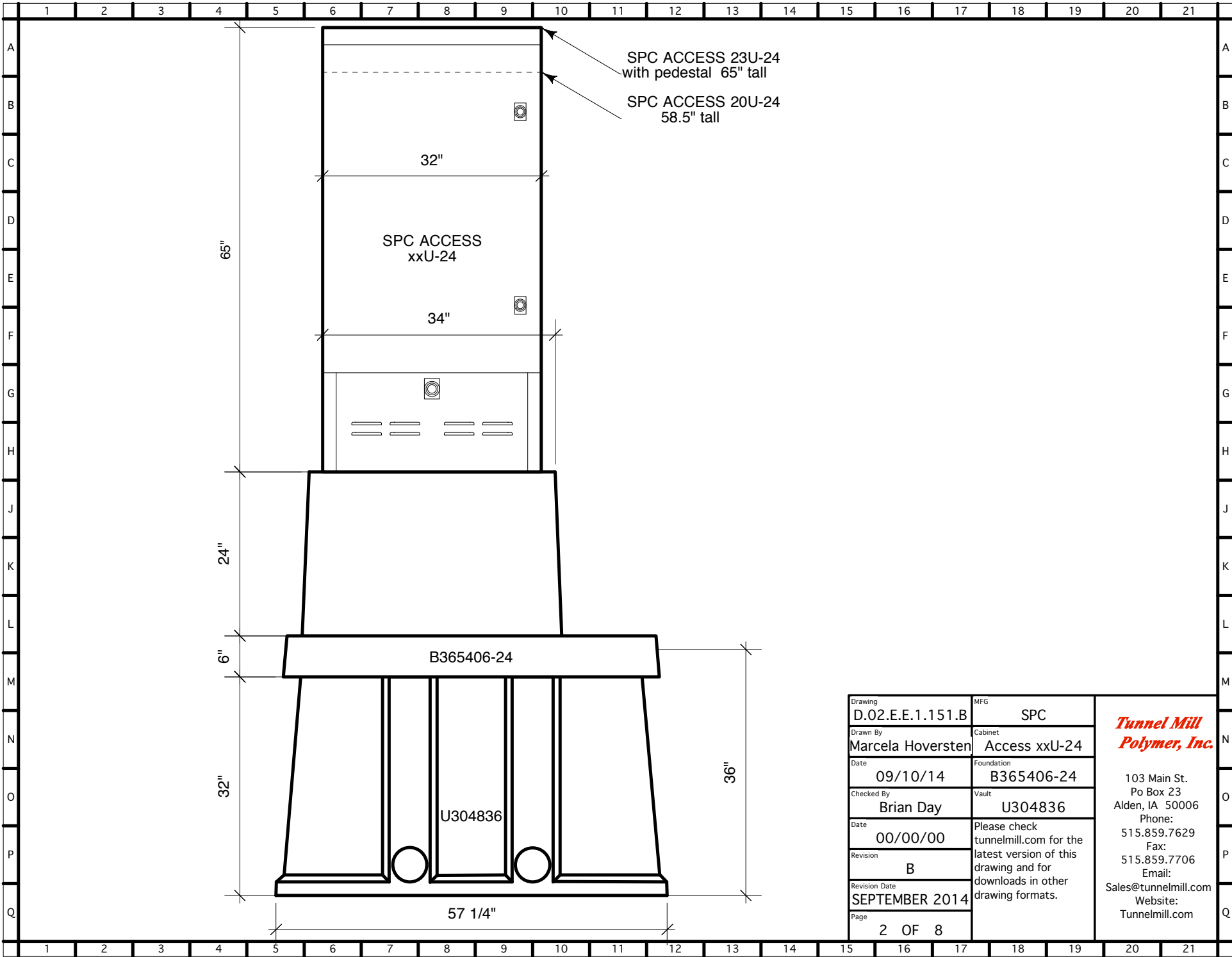


Drawing	D.02.E.E.1.151.B	MFG	SPC	<i>Tunnel Mill Polymer, Inc.</i> 103 Main St. Po Box 23 Alden, IA 50006 Phone: 515.859.7629 Fax: 515.859.7706 Email: Sales@tunnelmill.com Website: Tunnelmill.com
Drawn By	Marcela Hoversten	Cabinet	Access xxU-24	
Date	09/10/14	Foundation	B365406-24	
Checked By	Brian Day	Vault	U304836	
Date	00/00/00	Please check tunnelmill.com for the latest version of this drawing and for downloads in other drawing formats.		
Revision	B			
Revision Date	SEPTEMBER 2014			
Page	1 OF 8			



SPC ACCESS 23U-24
with pedestal 65" tall

SPC ACCESS 20U-24
58.5" tall

65"

32"

SPC ACCESS
xxU-24

34"

24"

6"

32"

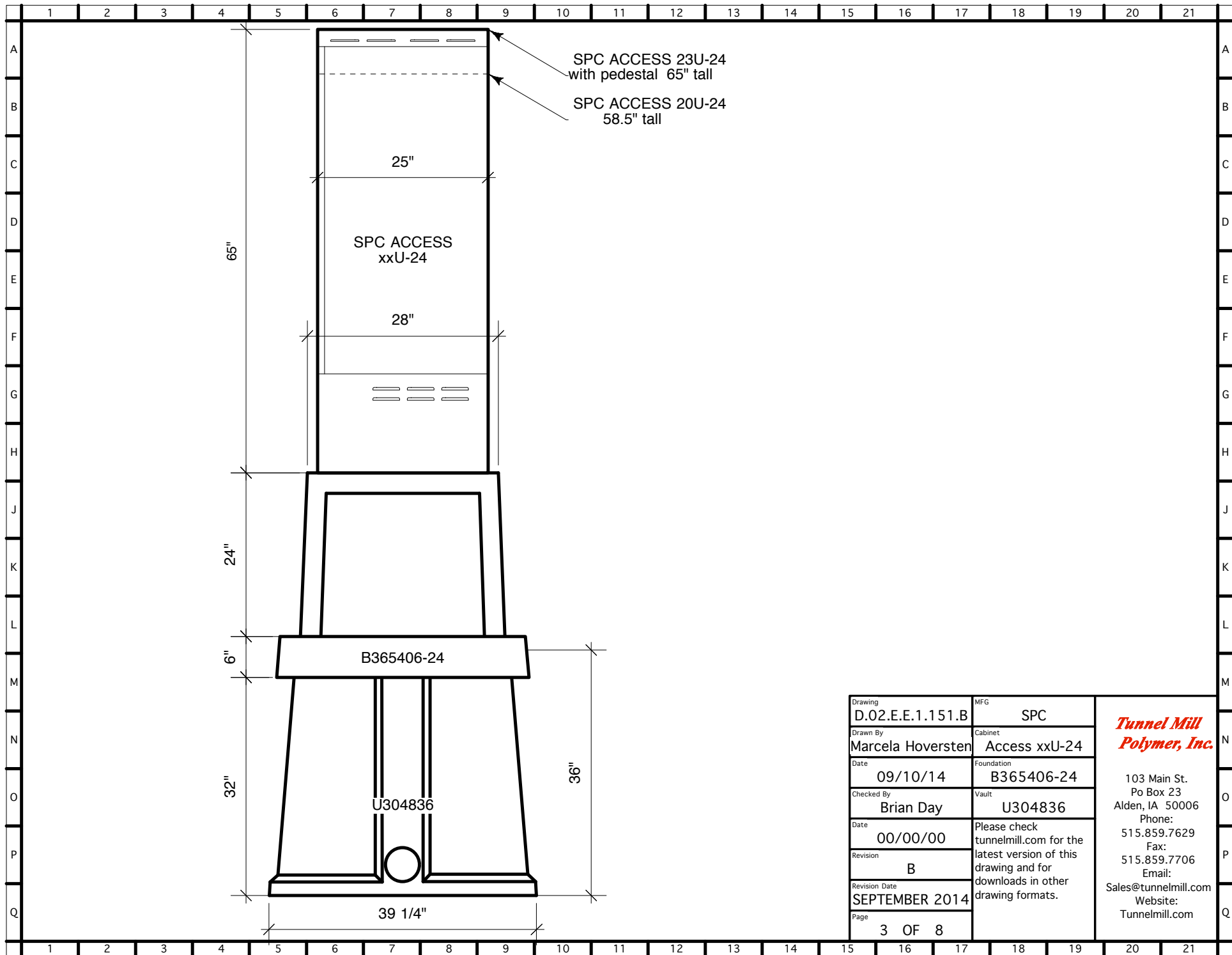
36"

57 1/4"

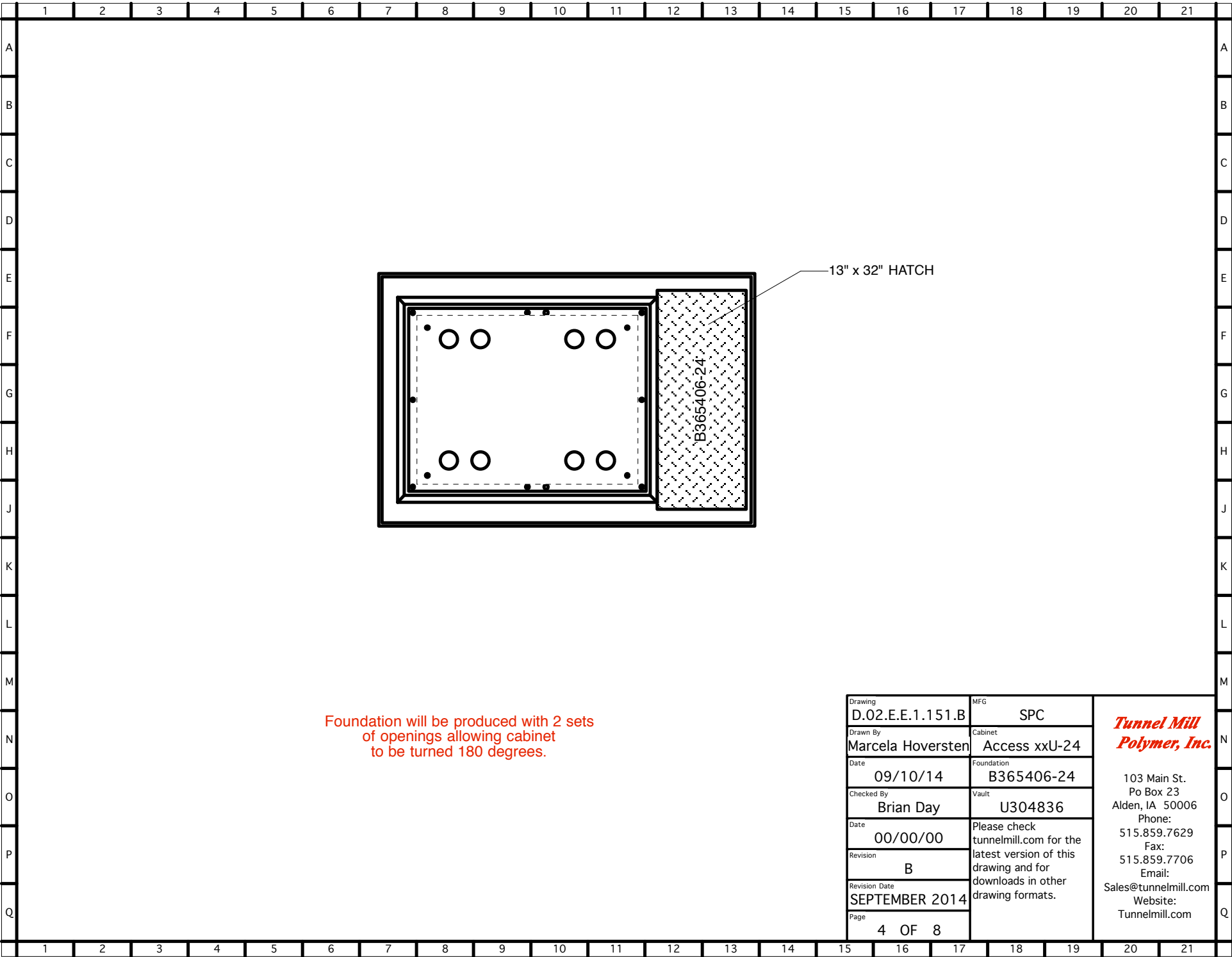
Drawing D.02.E.E.1.151.B	MFG SPC
Drawn By Marcela Hoversten	Cabinet Access xxU-24
Date 09/10/14	Foundation B365406-24
Checked By Brian Day	Vault U304836
Date 00/00/00	Please check tunnelmill.com for the latest version of this drawing and for downloads in other drawing formats.
Revision B	
Revision Date SEPTEMBER 2014	
Page 2 OF 8	

***Tunnel Mill
Polymer, Inc.***

103 Main St.
Po Box 23
Alden, IA 50006
Phone:
515.859.7629
Fax:
515.859.7706
Email:
Sales@tunnelmill.com
Website:
Tunnelmill.com



Drawing	D.02.E.E.1.151.B	MFG	SPC	<i>Tunnel Mill Polymer, Inc.</i> 103 Main St. Po Box 23 Alden, IA 50006 Phone: 515.859.7629 Fax: 515.859.7706 Email: Sales@tunnelmill.com Website: Tunnelmill.com
Drawn By	Marcela Hoversten	Cabinet	Access xxU-24	
Date	09/10/14	Foundation	B365406-24	
Checked By	Brian Day	Vault	U304836	
Date	00/00/00	Please check tunnelmill.com for the latest version of this drawing and for downloads in other drawing formats.		
Revision	B			
Revision Date	SEPTEMBER 2014			
Page	3 OF 8			



Foundation will be produced with 2 sets of openings allowing cabinet to be turned 180 degrees.

Drawing	D.02.E.E.1.151.B	MFG	SPC	<i>Tunnel Mill Polymer, Inc.</i> 103 Main St. Po Box 23 Alden, IA 50006 Phone: 515.859.7629 Fax: 515.859.7706 Email: Sales@tunnelmill.com Website: Tunnelmill.com
Drawn By	Marcela Hoversten	Cabinet	Access xxU-24	
Date	09/10/14	Foundation	B365406-24	
Checked By	Brian Day	Vault	U304836	
Date	00/00/00	Please check tunnelmill.com for the latest version of this drawing and for downloads in other drawing formats.		
Revision	B			
Revision Date	SEPTEMBER 2014			
Page	4 OF 8			