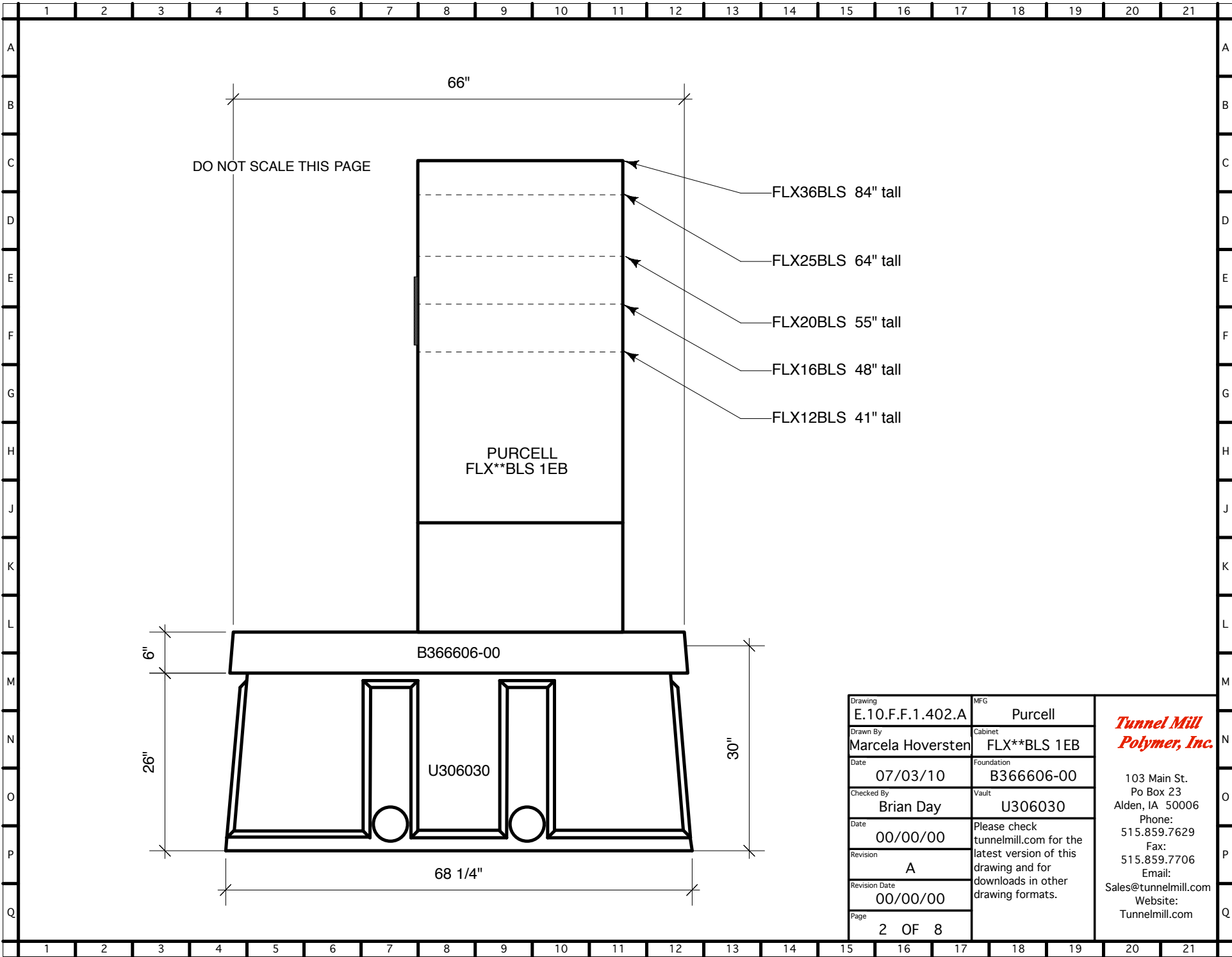


Doors have left or right side opening

Drawing	E.10.F.F.1.402.A	MFG	Purcell	<i>Tunnel Mill Polymer, Inc.</i> 103 Main St. Po Box 23 Alden, IA 50006 Phone: 515.859.7629 Fax: 515.859.7706 Email: Sales@tunnelmill.com Website: Tunnelmill.com
Drawn By	Marcela Hoversten	Cabinet	FLX**BLS 1EB	
Date	07/03/10	Foundation	B366606-00	
Checked By	Brian Day	Vault	U306030	
Date	00/00/00	Please check tunnelmill.com for the latest version of this drawing and for downloads in other drawing formats.		
Revision	A			
Revision Date	00/00/00			
Page	1 OF 8			



DO NOT SCALE THIS PAGE

PURCELL
FLX**BLS 1EB

- FLX36BLS 84" tall
- FLX25BLS 64" tall
- FLX20BLS 55" tall
- FLX16BLS 48" tall
- FLX12BLS 41" tall

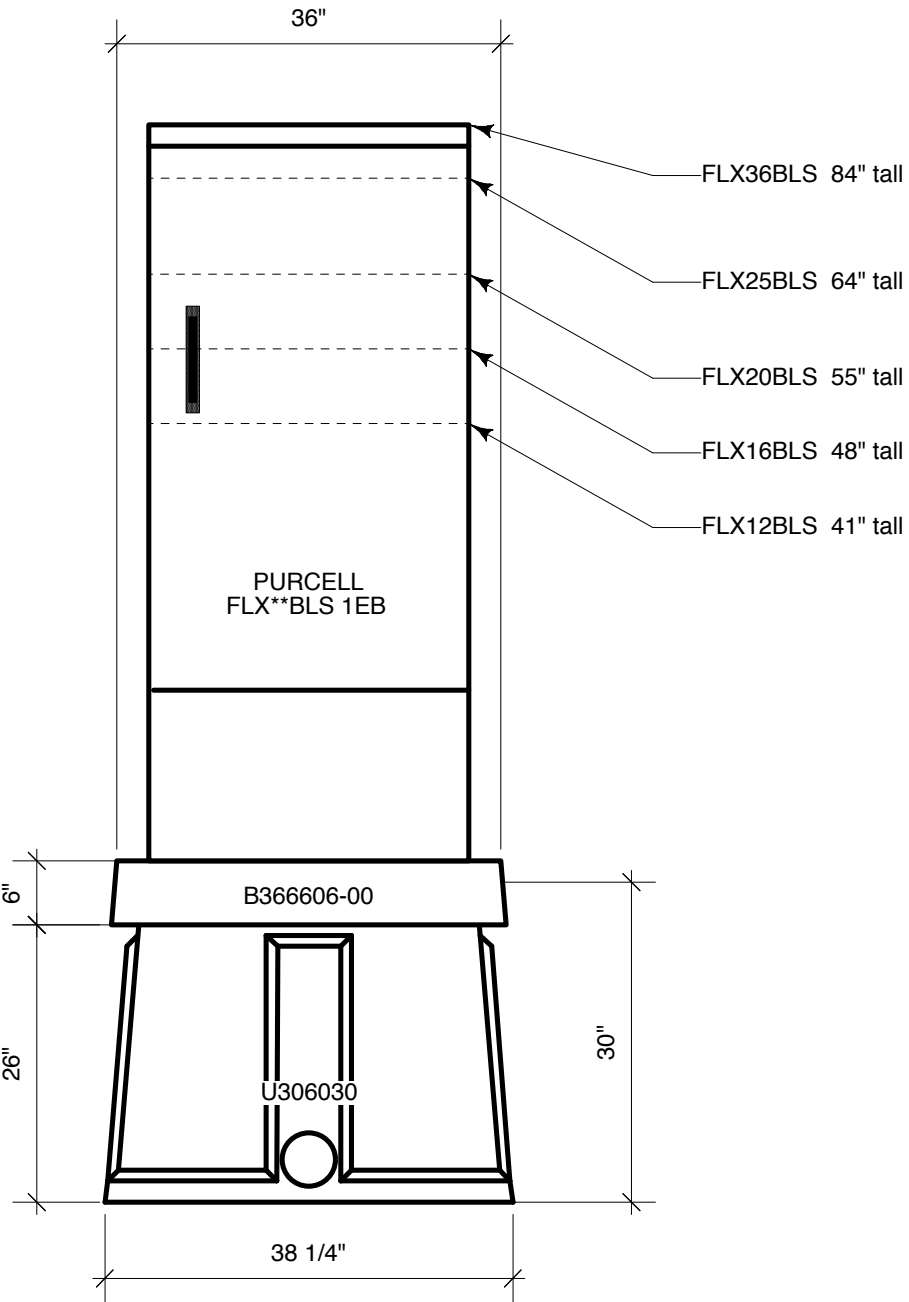
B366606-00

U306030

Drawing E.10.F.F.1.402.A	MFG Purcell
Drawn By Marcela Hoversten	Cabinet FLX**BLS 1EB
Date 07/03/10	Foundation B366606-00
Checked By Brian Day	Vault U306030
Date 00/00/00	Please check tunnelmill.com for the latest version of this drawing and for downloads in other drawing formats.
Revision A	
Revision Date 00/00/00	
Page 2 OF 8	

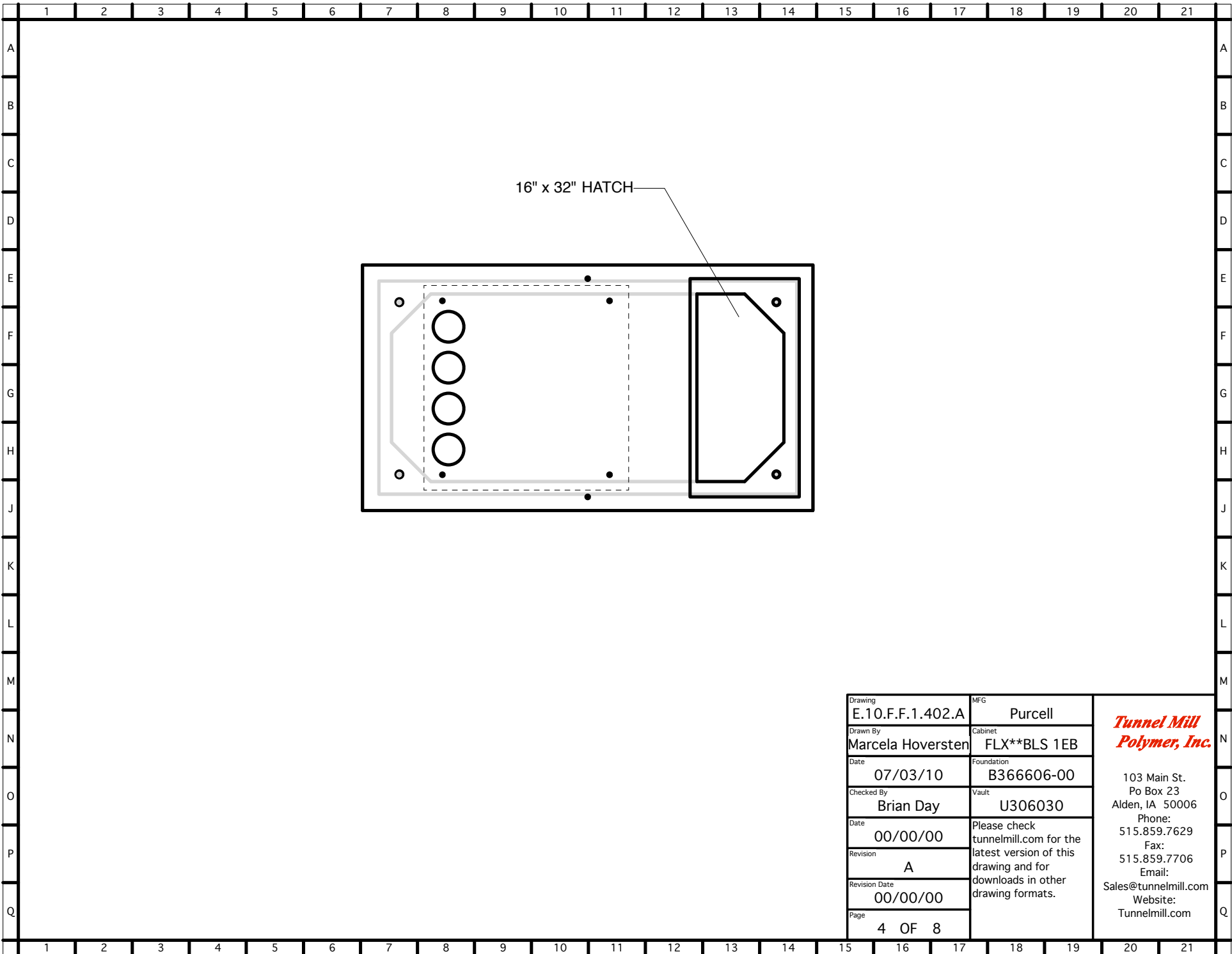
**Tunnel Mill
Polymer, Inc.**

103 Main St.
Po Box 23
Alden, IA 50006
Phone:
515.859.7629
Fax:
515.859.7706
Email:
Sales@tunnelmill.com
Website:
Tunnelmill.com



DO NOT SCALE THIS PAGE

Drawing	E.10.F.F.1.402.A	MFG	Purcell	<p><i>Tunnel Mill Polymer, Inc.</i></p> <p>103 Main St. Po Box 23 Alden, IA 50006 Phone: 515.859.7629 Fax: 515.859.7706 Email: Sales@tunnelmill.com Website: Tunnelmill.com</p>
Drawn By	Marcela Hoversten	Cabinet	FLX**BLS 1EB	
Date	07/03/10	Foundation	B366606-00	
Checked By	Brian Day	Vault	U306030	
Date	00/00/00	Please check tunnelmill.com for the latest version of this drawing and for downloads in other drawing formats.		
Revision	A			
Revision Date	00/00/00			
Page	3 OF 8			



Drawing E.10.F.F.1.402.A	MFG Purcell	<p><i>Tunnel Mill Polymer, Inc.</i></p> <p>103 Main St. Po Box 23 Alden, IA 50006 Phone: 515.859.7629 Fax: 515.859.7706 Email: Sales@tunnelmill.com Website: Tunnelmill.com</p>
Drawn By Marcela Hoversten	Cabinet FLX**BLS 1EB	
Date 07/03/10	Foundation B366606-00	
Checked By Brian Day	Vault U306030	
Date 00/00/00	Please check tunnelmill.com for the latest version of this drawing and for downloads in other drawing formats.	
Revision A		
Revision Date 00/00/00		
Page 4 OF 8		

Purcell FlexSure BLS

	1 EB only	1 EB + 1 EC	2 EB + 1 EC	2EB + 2 EC	3 EB + 1 EC	3 EB + 2 EC	4 EB + 1 EC	4 EB + 2 EC
FLX12BLS (EB only)	41x30x30	-	-	-	-	-	-	-
FLX12BLS(with 16" EC)	-	41x46x30	41x76x30	41x92x30	41x106x30	41x122x30	41x136x30	41x152x30
FLX12BLS (with 10" EC)	-	41x40x30	41x70x30	41x80x30	41x100x30	41x110x30	41x130x30	41x140x30
TMPI cabinet number	E.10	E.11	E.12	E.13	E.14	E.15	E.16	E.17
FLX16BLS (EB only)	48x30x30	-	-	-	-	-	-	-
FLX16BLS (with 16" EC)	-	48x46x30	48x76x30	48x92x30	48x106x30	48x122x30	48x136x30	48x152x30
FLX16BLS (with 10" EC)	-	48x40x30	48x70x30	48x80x30	48x100x30	48x110x30	48x130x30	48x140x30
TMPI cabinet number	E.10	E.11	E.12	E.13	E.14	E.15	E.16	E.17
FLX20BLS (EB only)	55x30x30	-	-	-	-	-	-	-
FLX20BLS (with 16" EC)	-	55x46x30	55x76x30	55x92x30	55x106x30	55x122x30	55x136x30	55x152x30
FLX20BLS (with 10" EC)	-	55x40x30	55x70x30	55x80x30	55x100x30	55x110x30	55x130x30	55x140x30
TMPI cabinet number	E.10	E.11	E.12	E.13	E.14	E.15	E.16	E.17
FLX25BLS (EB only)	64x30x30	-	-	-	-	-	-	-
FLX25BLS (with 16" EC)	-	64x46x30	64x76x30	64x92x30	64x106x30	64x122x30	64x136x30	64x152x30
FLX25BLS (with 10" EC)	-	64x40x30	64x70x30	64x80x30	64x100x30	64x110x30	64x130x30	64x140x30
TMPI cabinet number	E.10	E.11	E.12	E.13	E.14	E.15	E.16	E.17
FLX36BLS (EB only)	84x30x30	-	-	-	-	-	-	-
FLX36BLS (with 16" EC)	-	84x46x30	84x76x30	84x92x30	84x106x30	84x122x30	84x136x30	84x152x30
FLX36BLS (with 10" EC)	-	84x40x30	84x70x30	84x80x30	84x100x30	84x110x30	84x130x30	84x140x30
TMPI cabinet number	E.10	E.11	E.12	E.13	E.14	E.15	E.16	E.17

EB = Equipment Bay
EC = End Chamber
All dimensions exterior (H x W x D)

Drawing E.10.F.F.1.402.A	MFG Purcell	<i>Tunnel Mill Polymer, Inc.</i> 103 Main St. Po Box 23 Alden, IA 50006 Phone: 515.859.7629 Fax: 515.859.7706 Email: Sales@tunnelmill.com Website: Tunnelmill.com
Drawn By Marcela Hoversten	Cabinet FLX**BLS 1EB	
Date 07/03/10	Foundation B366606-00	
Checked By Brian Day	Vault U306030	
Date 00/00/00	Please check tunnelmill.com for the latest version of this drawing and for downloads in other drawing formats.	
Revision A		
Revision Date 00/00/00		
Page 5 OF 8		