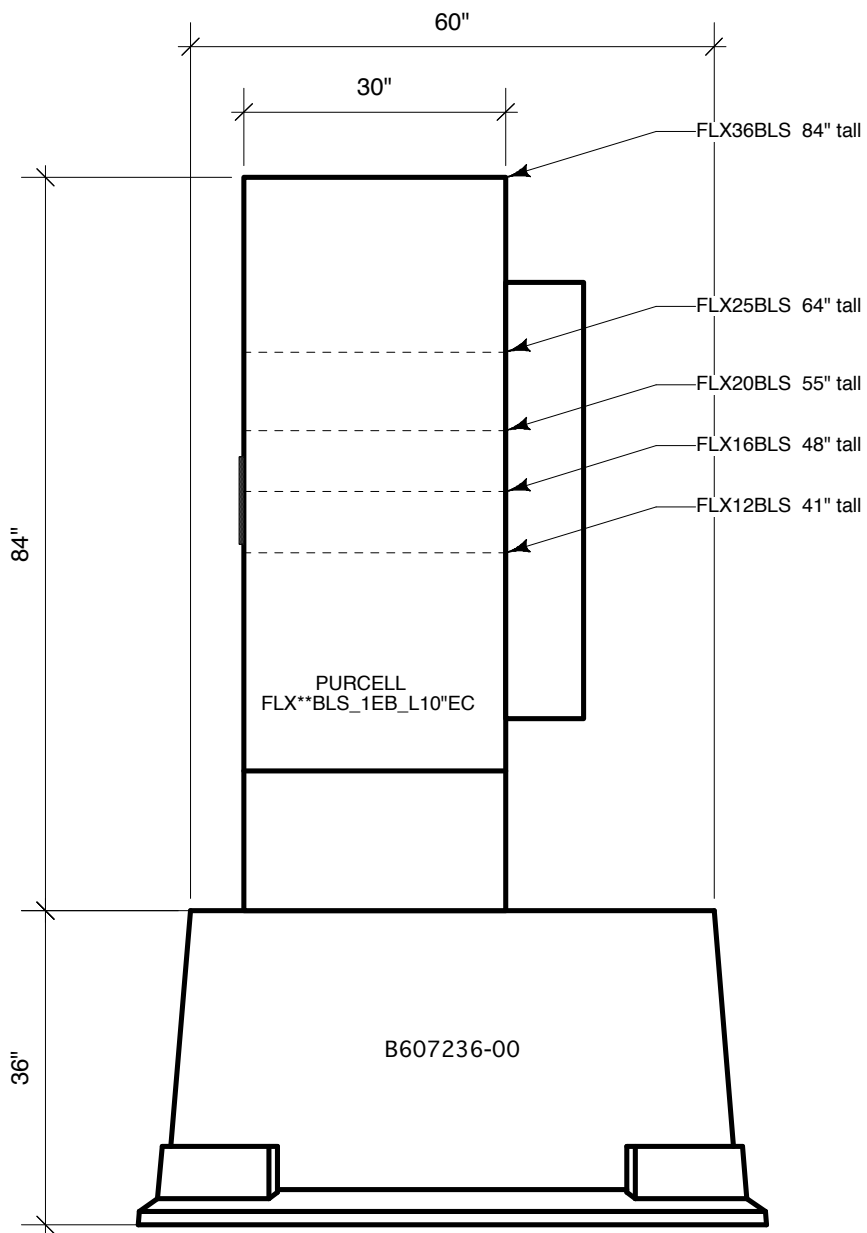


Doors have left or right side opening

PURCELL  
FLX\*\*BLS\_1EB\_L10\"/>

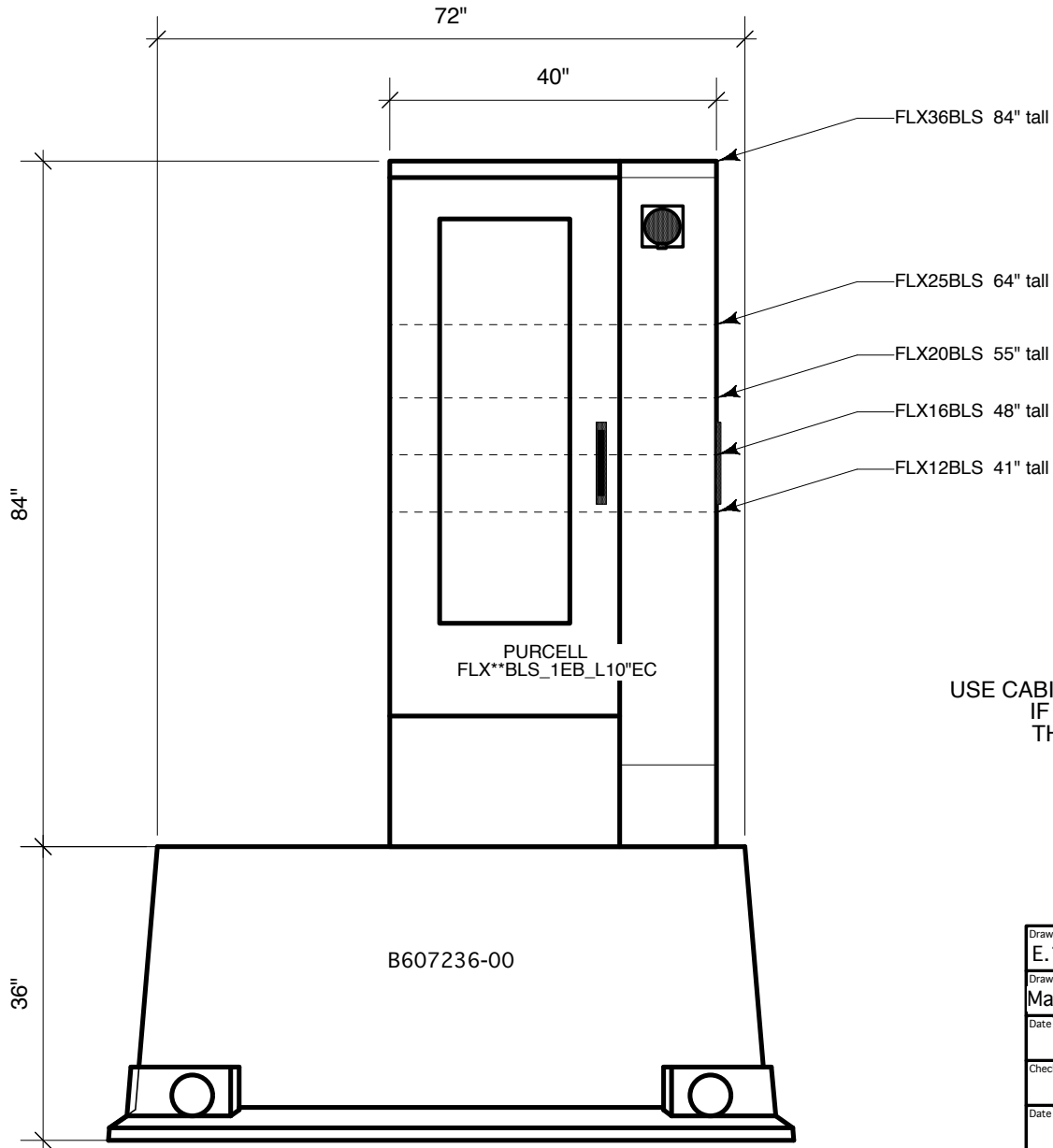
USE CABINET WITH 10\"/>

Drawing E.11.P.A.1.063.A	MFG Purcell	<b><i>Tunnel Mill Polymer, Inc.</i></b>  103 Main St. Po Box 23 Alden, IA 50006 Phone: 515.859.7629 Fax: 515.859.7706 Email: Sales@tunnelmill.com Website: Tunnelmill.com
Drawn By Marcela HoversFLX	Cabinet ** BLS_1EB_L10\"/>	
Date 11/12/10	Foundation B607236-00	
Checked By Brian Day	Vault NA	
Date 00/00/00	Please check tunnelmill.com for the latest version of this drawing and for downloads in other drawing formats.	
Revision A		
Revision Date 00/00/00		
Page 1 OF 8		



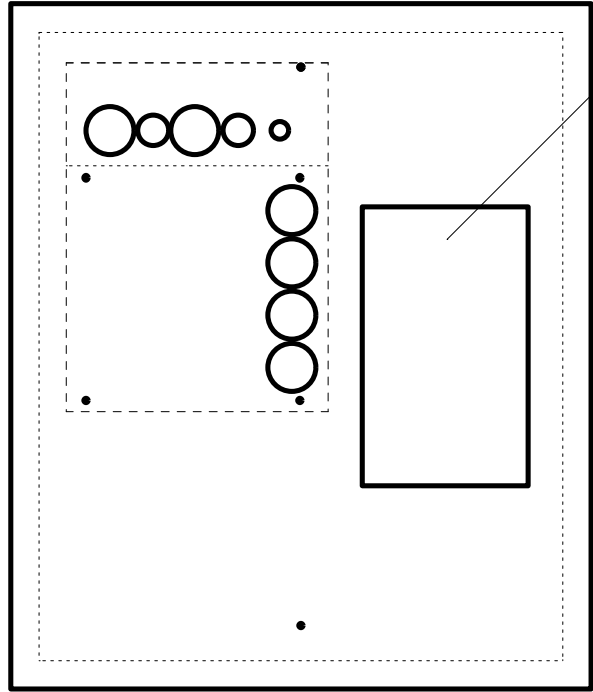
USE CABINET WITH 10" END CHAMBER ONLY!  
IF USING 16" END CHAMBER IN  
THIS POSITION, CABINET WILL  
OVERHANG BY 2.5".

Drawing	E.11.P.A.1.063.A	MFG	Purcell	<b><i>Tunnel Mill Polymer, Inc.</i></b>
Drawn By	Marcela HoversFLX	Cabinet	** BLS_1EB_L10"EC	
Date	11/12/10	Foundation	B607236-00	103 Main St. Po Box 23 Alden, IA 50006 Phone: 515.859.7629 Fax: 515.859.7706 Email: Sales@tunnelmill.com Website: Tunnelmill.com
Checked By	Brian Day	Vault	NA	
Date	00/00/00	Please check tunnelmill.com for the latest version of this drawing and for downloads in other drawing formats.		
Revision	A			
Revision Date	00/00/00			
Page	2 OF 8			



USE CABINET WITH 10" END CHAMBER ONLY!  
 IF USING 16" END CHAMBER IN  
 THIS POSITION, CABINET WILL  
 OVERHANG BY 2.5".

Drawing	E.11.P.A.1.063.A	MFG	Purcell	<b><i>Tunnel Mill Polymer, Inc.</i></b>
Drawn By	Marcela Hovers	Cabinet	FLX ** BLS_1EB_L10"EC	
Date	11/12/10	Foundation	B607236-00	103 Main St. Po Box 23 Alden, IA 50006 Phone: 515.859.7629 Fax: 515.859.7706 Email: Sales@tunnelmill.com Website: Tunnelmill.com
Checked By	Brian Day	Vault	NA	
Date	00/00/00	Please check tunnelmill.com for the latest version of this drawing and for downloads in other drawing formats.		
Revision	A			
Revision Date	00/00/00			
Page	3 OF 8			



19" x 32" HATCH

USE CABINET WITH 10" END CHAMBER ONLY!  
 IF USING 16" END CHAMBER IN  
 THIS POSITION, CABINET WILL  
 OVERHANG BY 2.5".

Drawing	E.11.P.A.1.063.A	MFG	Purcell	<b><i>Tunnel Mill          Polymer, Inc.</i></b>  103 Main St. Po Box 23 Alden, IA 50006 Phone: 515.859.7629 Fax: 515.859.7706 Email: Sales@tunnelmill.com Website: Tunnelmill.com
Drawn By	Marcela HoversFLX	Cabinet	** BLS_1EB_L10"EC	
Date	11/12/10	Foundation	B607236-00	
Checked By	Brian Day	Vault	NA	
Date	00/00/00	Please check tunnelmill.com for the latest version of this drawing and for downloads in other drawing formats.		
Revision	A			
Revision Date	00/00/00			
Page	4 OF 8			

# Purcell FlexSure BLS

	1 EB only	1 EB + 1 EC	2 EB + 1 EC	2EB + 2 EC	3 EB + 1 EC	3 EB + 2 EC	4 EB + 1 EC	4 EB + 2 EC
FLX12BLS (EB only)	41x30x30	-	-	-	-	-	-	-
FLX12BLS(with 16" EC )	-	41x46x30	41x76x30	41x92x30	41x106x30	41x122x30	41x136x30	41x152x30
FLX12BLS (with 10" EC )	-	41x40x30	41x70x30	41x80x30	41x100x30	41x110x30	41x130x30	41x140x300
TMPI cabinet number	<b>E.10</b>	<b>E.11</b>	<b>E.12</b>	<b>E.13</b>	<b>E.14</b>	<b>E.15</b>	<b>E.16</b>	<b>E.17</b>
FLX16BLS (EB only)	48x30x30	-	-	-	-	-	-	-
FLX16BLS (with 16" EC )	-	48x46x30	48x76x30	48x92x30	48x106x30	48x122x30	48x136x30	48x152x30
FLX16BLS (with 10" EC )	-	48x40x30	48x70x30	48x80x30	48x100x30	48x110x30	48x130x30	48x140x30
TMPI cabinet number	<b>E.10</b>	<b>E.11</b>	<b>E.12</b>	<b>E.13</b>	<b>E.14</b>	<b>E.15</b>	<b>E.16</b>	<b>E.17</b>
FLX20BLS (EB only)	55x30x30	-	-	-	-	-	-	-
FLX20BLS (with 16" EC )	-	55x46x30	55x76x30	55x92x30	55x106x30	55x122x30	55x136x30	55x152x30
FLX20BLS (with 10" EC )	-	55x40x30	55x70x30	55x80x30	55x100x30	55x110x30	55x130x30	55x140x30
TMPI cabinet number	<b>E.10</b>	<b>E.11</b>	<b>E.12</b>	<b>E.13</b>	<b>E.14</b>	<b>E.15</b>	<b>E.16</b>	<b>E.17</b>
FLX25BLS (EB only)	64x30x30	-	-	-	-	-	-	-
FLX25BLS (with 16" EC )	-	64x46x30	64x76x30	64x92x30	64x106x30	64x122x30	64x136x30	64x152x30
FLX25BLS (with 10" EC )	-	64x40x30	64x70x30	64x80x30	64x100x30	64x110x30	64x130x30	64x140x30
TMPI cabinet number	<b>E.10</b>	<b>E.11</b>	<b>E.12</b>	<b>E.13</b>	<b>E.14</b>	<b>E.15</b>	<b>E.16</b>	<b>E.17</b>
FLX36BLS (EB only)	84x30x30	-	-	-	-	-	-	-
FLX36BLS (with 16" EC )	-	84x46x30	84x76x30	84x92x30	84x106x30	84x122x30	84x136x30	84x152x30
FLX36BLS (with 10" EC )	-	84x40x30	84x70x30	84x80x30	84x100x30	84x110x30	84x130x30	84x140x30
TMPI cabinet number	<b>E.10</b>	<b>E.11</b>	<b>E.12</b>	<b>E.13</b>	<b>E.14</b>	<b>E.15</b>	<b>E.16</b>	<b>E.17</b>

EB = Equipment Bay  
 EC = End Chamber  
 All dimensions exterior ( H x W x D )

Drawing E.11.P.A.1.063.A	MFG Purcell	<b><i>Tunnel Mill Polymer, Inc.</i></b>
Drawn By Marcela HoversFLX	Cabinet ** BLS_1EB_L10"	
Date 11/12/10	Foundation B607236-00	103 Main St. Po Box 23 Alden, IA 50006 Phone: 515.859.7629 Fax: 515.859.7706 Email: Sales@tunnelmill.com Website: Tunnelmill.com
Checked By Brian Day	Vault NA	
Date 00/00/00	Please check tunnelmill.com for the latest version of this drawing and for downloads in other drawing formats.	
Revision A		
Revision Date 00/00/00		
Page 5 OF 8		