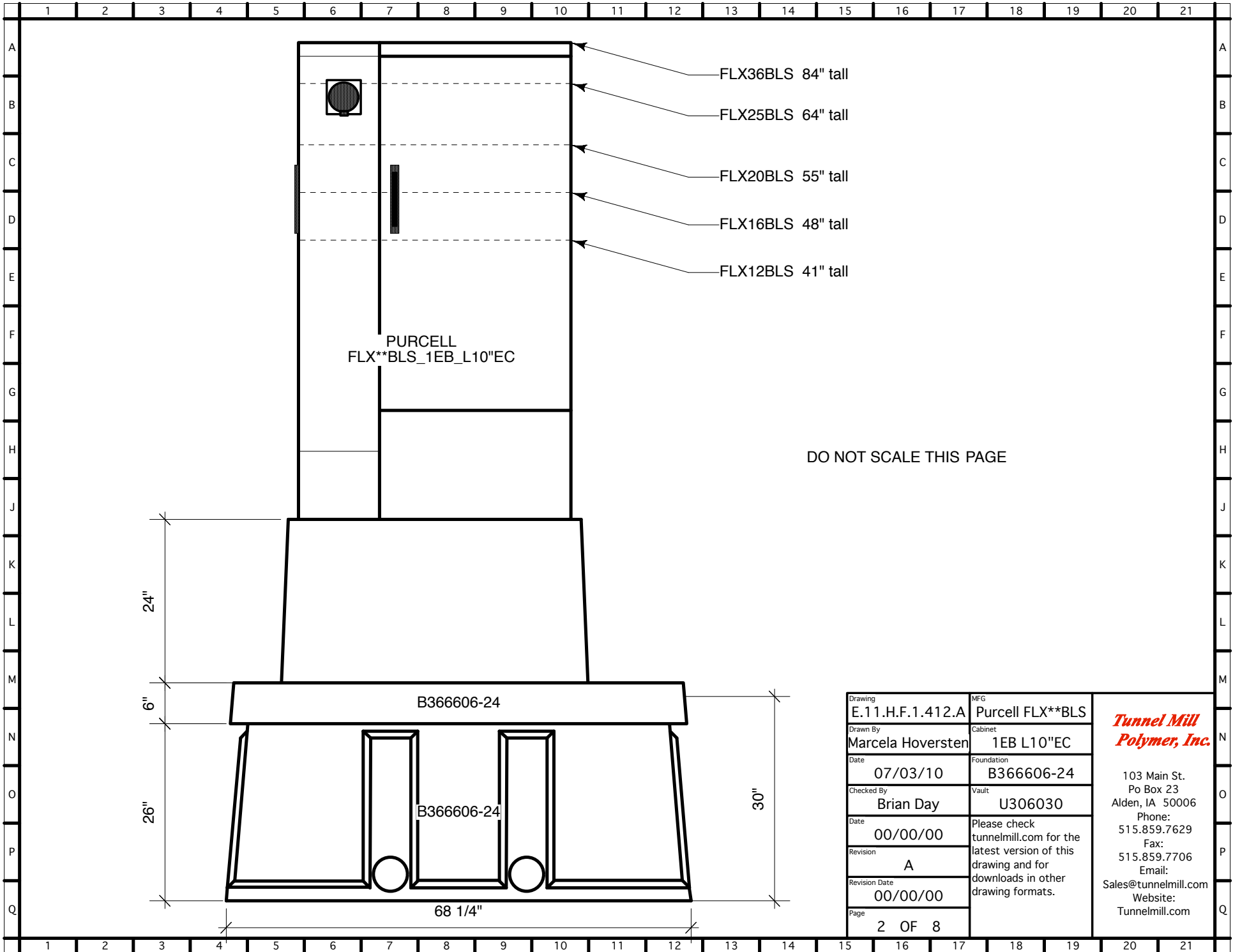


If using 16" End Chamber  
with this foundation,  
cabinet will overhang by 3".

Doors have left or right side opening

Drawing	E.11.H.F.1.412.A	MFG	Purcell FLX**BLS	<p><b><i>Tunnel Mill Polymer, Inc.</i></b></p> <p>103 Main St. Po Box 23 Alden, IA 50006 Phone: 515.859.7629 Fax: 515.859.7706 Email: Sales@tunnelmill.com Website: Tunnelmill.com</p>
Drawn By	Marcela Hoversten	Cabinet	1EB L10"EC	
Date	07/03/10	Foundation	B366606-24	
Checked By	Brian Day	Vault	U306030	
Date	00/00/00	Please check tunnelmill.com for the latest version of this drawing and for downloads in other drawing formats.		
Revision	A			
Revision Date	00/00/00			
Page	1 OF 8			

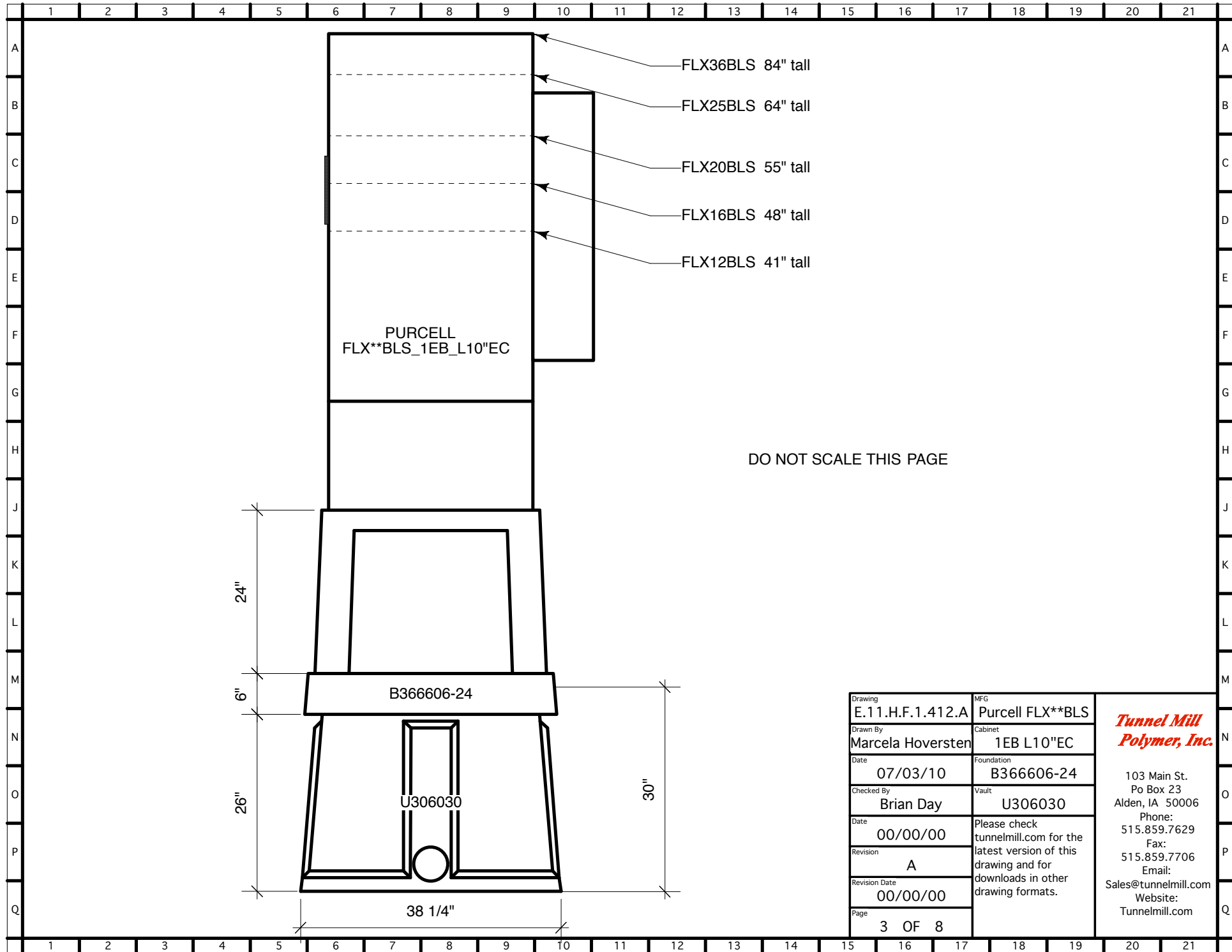


DO NOT SCALE THIS PAGE

Drawing	E.11.H.F.1.412.A	MFG	Purcell FLX**BLS
Drawn By	Marcela Hoversten	Cabinet	1EB L10"EC
Date	07/03/10	Foundation	B366606-24
Checked By	Brian Day	Vault	U306030
Date	00/00/00	Please check tunnelmill.com for the latest version of this drawing and for downloads in other drawing formats.	
Revision	A		
Revision Date	00/00/00		
Page	2 OF 8		

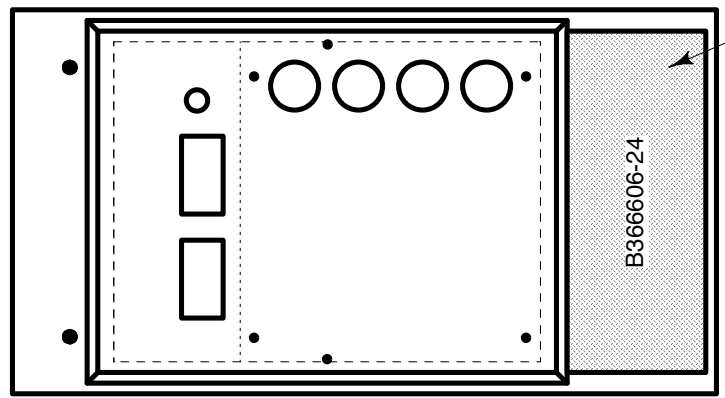
***Tunnel Mill  
Polymer, Inc.***

103 Main St.  
Po Box 23  
Alden, IA 50006  
Phone: 515.859.7629  
Fax: 515.859.7706  
Email: Sales@tunnelmill.com  
Website: Tunnelmill.com



Drawing	E.11.H.F.1.412.A	MFG	Purcell FLX**BLS
Drawn By	Marcela Hoversten	Cabinet	1EB L10"EC
Date	07/03/10	Foundation	B366606-24
Checked By	Brian Day	Vault	U306030
Date	00/00/00	Please check tunnelmill.com for the latest version of this drawing and for downloads in other drawing formats.	
Revision	A		
Revision Date	00/00/00		
Page	3 OF 8		

***Tunnel Mill  
 Polymer, Inc.***  
 103 Main St.  
 Po Box 23  
 Alden, IA 50006  
 Phone:  
 515.859.7629  
 Fax:  
 515.859.7706  
 Email:  
 Sales@tunnelmill.com  
 Website:  
 Tunnelmill.com



13" x 32" HATCH

B366606-24

Drawing	E.11.H.F.1.412.A	MFG	Purcell FLX**BLS	<b><i>Tunnel Mill Polymer, Inc.</i></b>  103 Main St. Po Box 23 Alden, IA 50006 Phone: 515.859.7629 Fax: 515.859.7706 Email: Sales@tunnelmill.com Website: Tunnelmill.com
Drawn By	Marcela Hoversten	Cabinet	1EB L10"EC	
Date	07/03/10	Foundation	B366606-24	
Checked By	Brian Day	Vault	U306030	
Date	00/00/00	Please check tunnelmill.com for the latest version of this drawing and for downloads in other drawing formats.		
Revision	A			
Revision Date	00/00/00			
Page	4 OF 8			

# Purcell FlexSure BLS

	1 EB only	1 EB + 1 EC	2 EB + 1 EC	2EB + 2 EC	3 EB + 1 EC	3 EB + 2 EC	4 EB + 1 EC	4 EB + 2 EC
FLX12BLS (EB only)	41x30x30	-	-	-	-	-	-	-
FLX12BLS(with 16" EC )	-	41x46x30	41x76x30	41x92x30	41x106x30	41x122x30	41x136x30	41x152x30
FLX12BLS (with 10" EC )	-	41x40x30	41x70x30	41x80x30	41x100x30	41x110x30	41x130x30	41x140x300
TMPI cabinet number	<b>E.10</b>	<b>E.11</b>	<b>E.12</b>	<b>E.13</b>	<b>E.14</b>	<b>E.15</b>	<b>E.16</b>	<b>E.17</b>
FLX16BLS (EB only)	48x30x30	-	-	-	-	-	-	-
FLX16BLS (with 16" EC )	-	48x46x30	48x76x30	48x92x30	48x106x30	48x122x30	48x136x30	48x152x30
FLX16BLS (with 10" EC )	-	48x40x30	48x70x30	48x80x30	48x100x30	48x110x30	48x130x30	48x140x30
TMPI cabinet number	<b>E.10</b>	<b>E.11</b>	<b>E.12</b>	<b>E.13</b>	<b>E.14</b>	<b>E.15</b>	<b>E.16</b>	<b>E.17</b>
FLX20BLS (EB only)	55x30x30	-	-	-	-	-	-	-
FLX20BLS (with 16" EC )	-	55x46x30	55x76x30	55x92x30	55x106x30	55x122x30	55x136x30	55x152x30
FLX20BLS (with 10" EC )	-	55x40x30	55x70x30	55x80x30	55x100x30	55x110x30	55x130x30	55x140x30
TMPI cabinet number	<b>E.10</b>	<b>E.11</b>	<b>E.12</b>	<b>E.13</b>	<b>E.14</b>	<b>E.15</b>	<b>E.16</b>	<b>E.17</b>
FLX25BLS (EB only)	64x30x30	-	-	-	-	-	-	-
FLX25BLS (with 16" EC )	-	64x46x30	64x76x30	64x92x30	64x106x30	64x122x30	64x136x30	64x152x30
FLX25BLS (with 10" EC )	-	64x40x30	64x70x30	64x80x30	64x100x30	64x110x30	64x130x30	64x140x30
TMPI cabinet number	<b>E.10</b>	<b>E.11</b>	<b>E.12</b>	<b>E.13</b>	<b>E.14</b>	<b>E.15</b>	<b>E.16</b>	<b>E.17</b>
FLX36BLS (EB only)	84x30x30	-	-	-	-	-	-	-
FLX36BLS (with 16" EC )	-	84x46x30	84x76x30	84x92x30	84x106x30	84x122x30	84x136x30	84x152x30
FLX36BLS (with 10" EC )	-	84x40x30	84x70x30	84x80x30	84x100x30	84x110x30	84x130x30	84x140x30
TMPI cabinet number	<b>E.10</b>	<b>E.11</b>	<b>E.12</b>	<b>E.13</b>	<b>E.14</b>	<b>E.15</b>	<b>E.16</b>	<b>E.17</b>

EB = Equipment Bay  
 EC = End Chamber  
 All dimensions exterior ( H x W x D )

Drawing	E.11.H.F.1.412.A	MFG	Purcell FLX**BLS
Drawn By	Marcela Hoversten	Cabinet	1EB L10"EC
Date	07/03/10	Foundation	B366606-24
Checked By	Name	Vault	U306030
Date	00/00/00	Please check tunnelmill.com for the latest version of this drawing and for downloads in other drawing formats.	
Revision	A		
Revision Date	00/00/00		
Page	5 OF 8		

*Tunnel Mill  
Polymer, Inc.*

103 Main St.  
 Po Box 23  
 Alden, IA 50006  
 Phone:  
 515.859.7629  
 Fax:  
 515.859.7706  
 Email:  
 Sales@tunnelmill.com  
 Website:  
 Tunnelmill.com