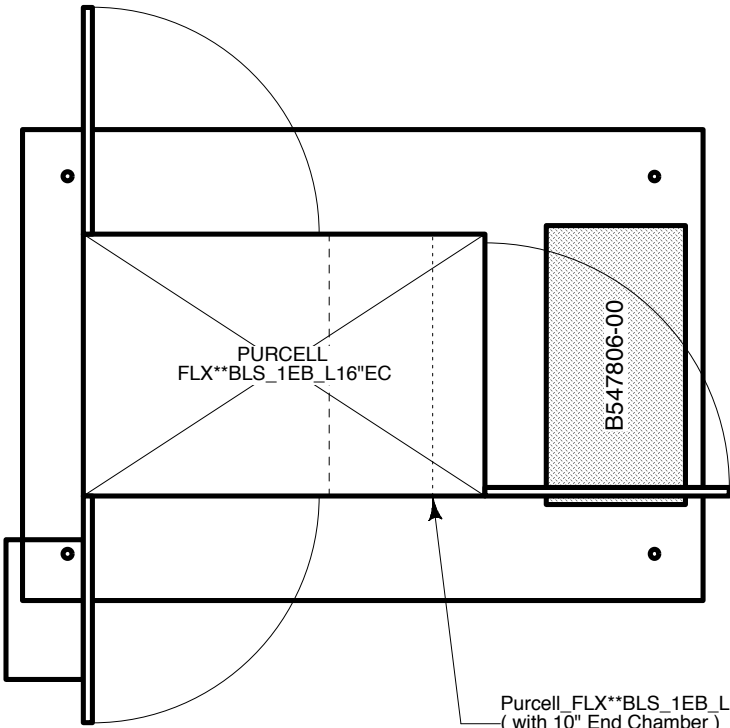


Doors have left or right side opening

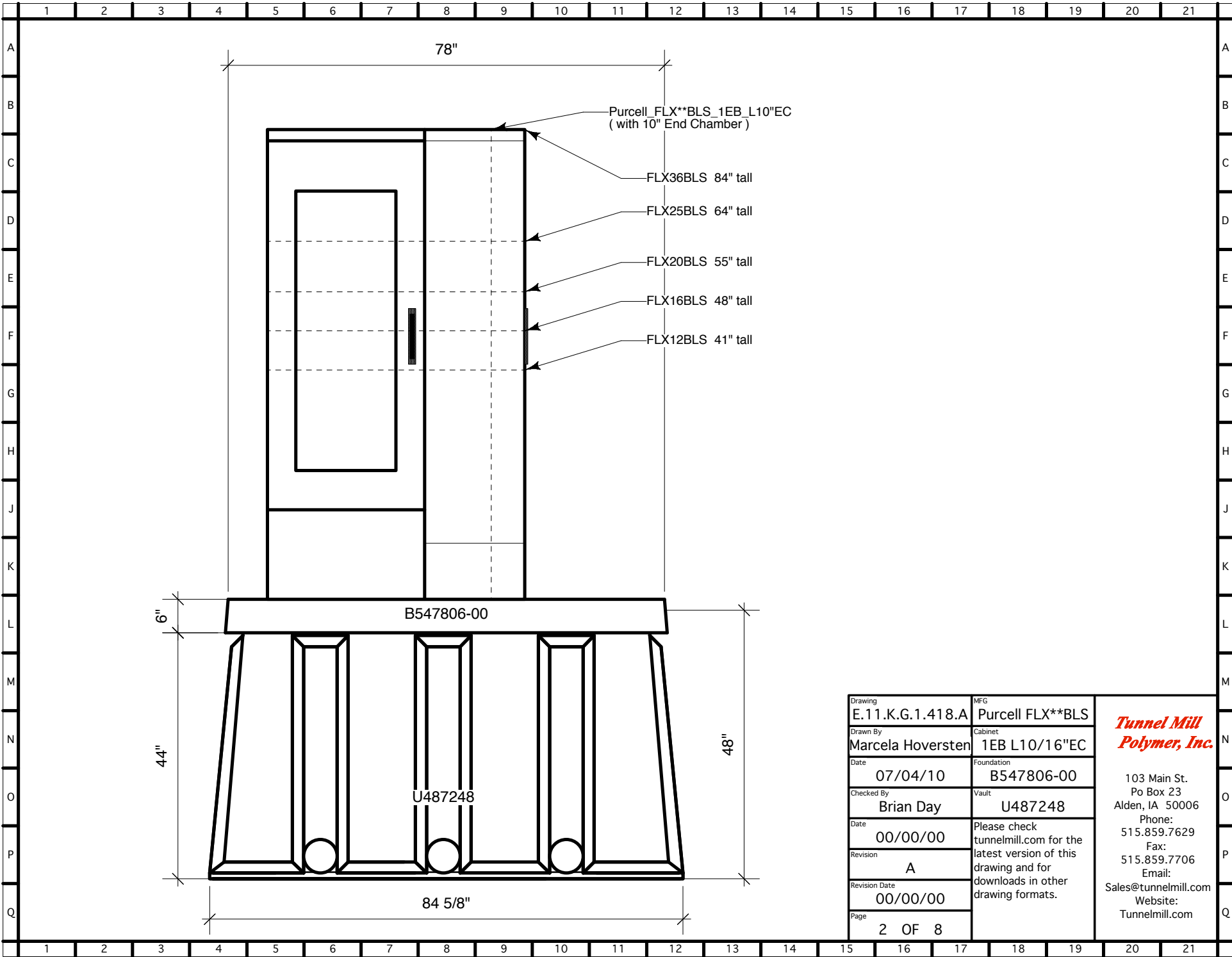


Purcell\_FLX\*\*BLS\_1EB\_L10\"/>

Drawing	E.11.K.G.1.418.A	MFG	Purcell FLX**BLS
Drawn By	Marcela Hoversten	Cabinet	1EB L10/16\"/>
Date	07/04/10	Foundation	B547806-00
Checked By	Brian Day	Vault	U487248
Date	00/00/00	Please check tunnelmill.com for the latest version of this drawing and for downloads in other drawing formats.	
Revision	A		
Revision Date	00/00/00		
Page	1 OF 8		

**Tunnel Mill  
Polymer, Inc.**

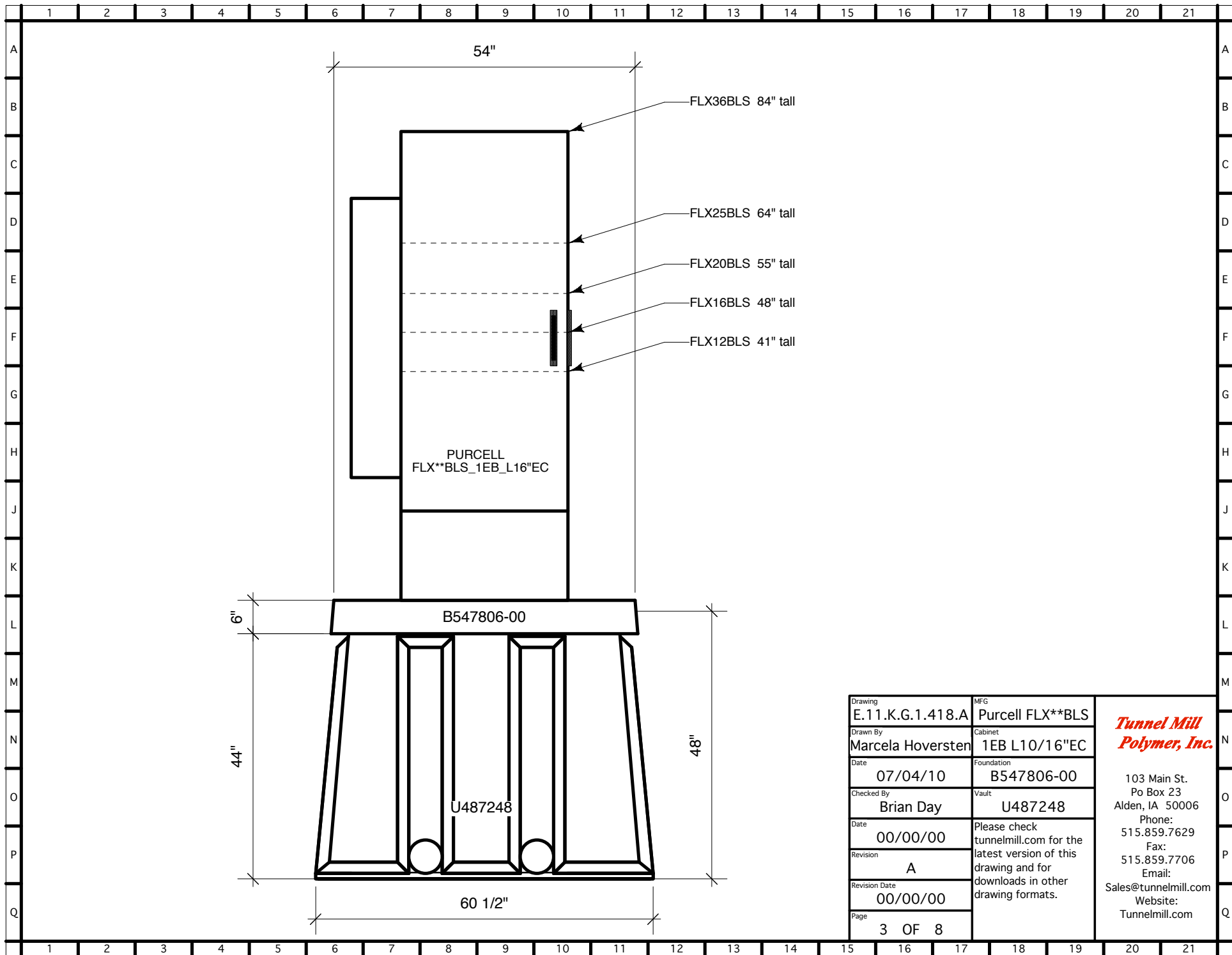
103 Main St.  
Po Box 23  
Alden, IA 50006  
Phone:  
515.859.7629  
Fax:  
515.859.7706  
Email:  
Sales@tunnelmill.com  
Website:  
Tunnelmill.com



Drawing	E.11.K.G.1.418.A	MFG	Purcell FLX**BLS
Drawn By	Marcela Hoversten	Cabinet	1EB L10/16"EC
Date	07/04/10	Foundation	B547806-00
Checked By	Brian Day	Vault	U487248
Date	00/00/00	Please check tunnelmill.com for the latest version of this drawing and for downloads in other drawing formats.	
Revision	A		
Revision Date	00/00/00		
Page	2 OF 8		

***Tunnel Mill  
Polymer, Inc.***

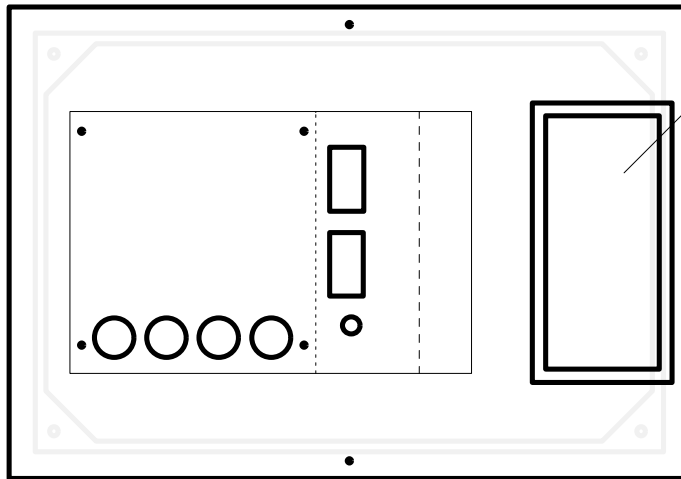
103 Main St.  
Po Box 23  
Alden, IA 50006  
Phone: 515.859.7629  
Fax: 515.859.7706  
Email: Sales@tunnelmill.com  
Website: Tunnelmill.com



Drawing	E.11.K.G.1.418.A	MFG	Purcell FLX**BLS
Drawn By	Marcela Hoversten	Cabinet	1EB L10/16"EC
Date	07/04/10	Foundation	B547806-00
Checked By	Brian Day	Vault	U487248
Date	00/00/00	Please check tunnelmill.com for the latest version of this drawing and for downloads in other drawing formats.	
Revision	A		
Revision Date	00/00/00		
Page	3 OF 8		

***Tunnel Mill  
Polymer, Inc.***

103 Main St.  
Po Box 23  
Alden, IA 50006  
Phone:  
515.859.7629  
Fax:  
515.859.7706  
Email:  
Sales@tunnelmill.com  
Website:  
Tunnelmill.com



16" x 32" HATCH

Drawing	E.11.K.G.1.418.A	MFG	Purcell FLX**BLS
Drawn By	Marcela Hoversten	Cabinet	1EB L10/16"EC
Date	07/04/10	Foundation	B547806-00
Checked By	Brian Day	Vault	U487248
Date	00/00/00	Please check tunnelmill.com for the latest version of this drawing and for downloads in other drawing formats.	
Revision	A		
Revision Date	00/00/00		
Page	4 OF 8	<p><b><i>Tunnel Mill Polymer, Inc.</i></b></p> <p>103 Main St. Po Box 23 Alden, IA 50006 Phone: 515.859.7629 Fax: 515.859.7706 Email: Sales@tunnelmill.com Website: Tunnelmill.com</p>	

# Purcell FlexSure BLS

	1 EB only	1 EB + 1 EC	2 EB + 1 EC	2EB + 2 EC	3 EB + 1 EC	3 EB + 2 EC	4 EB + 1 EC	4 EB + 2 EC
FLX12BLS (EB only)	41x30x30	-	-	-	-	-	-	-
FLX12BLS(with 16" EC )	-	41x46x30	41x76x30	41x92x30	41x106x30	41x122x30	41x136x30	41x152x30
FLX12BLS (with 10" EC )	-	41x40x30	41x70x30	41x80x30	41x100x30	41x110x30	41x130x30	41x140x300
TMPI cabinet number	<b>E.10</b>	<b>E.11</b>	<b>E.12</b>	<b>E.13</b>	<b>E.14</b>	<b>E.15</b>	<b>E.16</b>	<b>E.17</b>
FLX16BLS (EB only)	48x30x30	-	-	-	-	-	-	-
FLX16BLS (with 16" EC )	-	48x46x30	48x76x30	48x92x30	48x106x30	48x122x30	48x136x30	48x152x30
FLX16BLS (with 10" EC )	-	48x40x30	48x70x30	48x80x30	48x100x30	48x110x30	48x130x30	48x140x30
TMPI cabinet number	<b>E.10</b>	<b>E.11</b>	<b>E.12</b>	<b>E.13</b>	<b>E.14</b>	<b>E.15</b>	<b>E.16</b>	<b>E.17</b>
FLX20BLS (EB only)	55x30x30	-	-	-	-	-	-	-
FLX20BLS (with 16" EC )	-	55x46x30	55x76x30	55x92x30	55x106x30	55x122x30	55x136x30	55x152x30
FLX20BLS (with 10" EC )	-	55x40x30	55x70x30	55x80x30	55x100x30	55x110x30	55x130x30	55x140x30
TMPI cabinet number	<b>E.10</b>	<b>E.11</b>	<b>E.12</b>	<b>E.13</b>	<b>E.14</b>	<b>E.15</b>	<b>E.16</b>	<b>E.17</b>
FLX25BLS (EB only)	64x30x30	-	-	-	-	-	-	-
FLX25BLS (with 16" EC )	-	64x46x30	64x76x30	64x92x30	64x106x30	64x122x30	64x136x30	64x152x30
FLX25BLS (with 10" EC )	-	64x40x30	64x70x30	64x80x30	64x100x30	64x110x30	64x130x30	64x140x30
TMPI cabinet number	<b>E.10</b>	<b>E.11</b>	<b>E.12</b>	<b>E.13</b>	<b>E.14</b>	<b>E.15</b>	<b>E.16</b>	<b>E.17</b>
FLX36BLS (EB only)	84x30x30	-	-	-	-	-	-	-
FLX36BLS (with 16" EC )	-	84x46x30	84x76x30	84x92x30	84x106x30	84x122x30	84x136x30	84x152x30
FLX36BLS (with 10" EC )	-	84x40x30	84x70x30	84x80x30	84x100x30	84x110x30	84x130x30	84x140x30
TMPI cabinet number	<b>E.10</b>	<b>E.11</b>	<b>E.12</b>	<b>E.13</b>	<b>E.14</b>	<b>E.15</b>	<b>E.16</b>	<b>E.17</b>

EB = Equipment Bay  
EC = End Chamber  
All dimensions exterior ( H x W x D )

Drawing <b>E.11.K.G.1.418.A</b>	MFG <b>Purcell FLX**BLS</b>
Drawn By <b>Marcela Hoversten</b>	Cabinet <b>1EB L10/16"EC</b>
Date <b>07/04/10</b>	Foundation <b>B547806-00</b>
Checked By <b>Brian Day</b>	Vault <b>U487248</b>
Date <b>00/00/00</b>	Please check tunnelmill.com for the latest version of this drawing and for downloads in other drawing formats.
Revision <b>A</b>	
Revision Date <b>00/00/00</b>	
Page <b>5 OF 8</b>	

*Tunnel Mill  
Polymer, Inc.*

103 Main St.  
Po Box 23  
Alden, IA 50006  
Phone:  
515.859.7629  
Fax:  
515.859.7706  
Email:  
Sales@tunnelmill.com  
Website:  
Tunnelmill.com