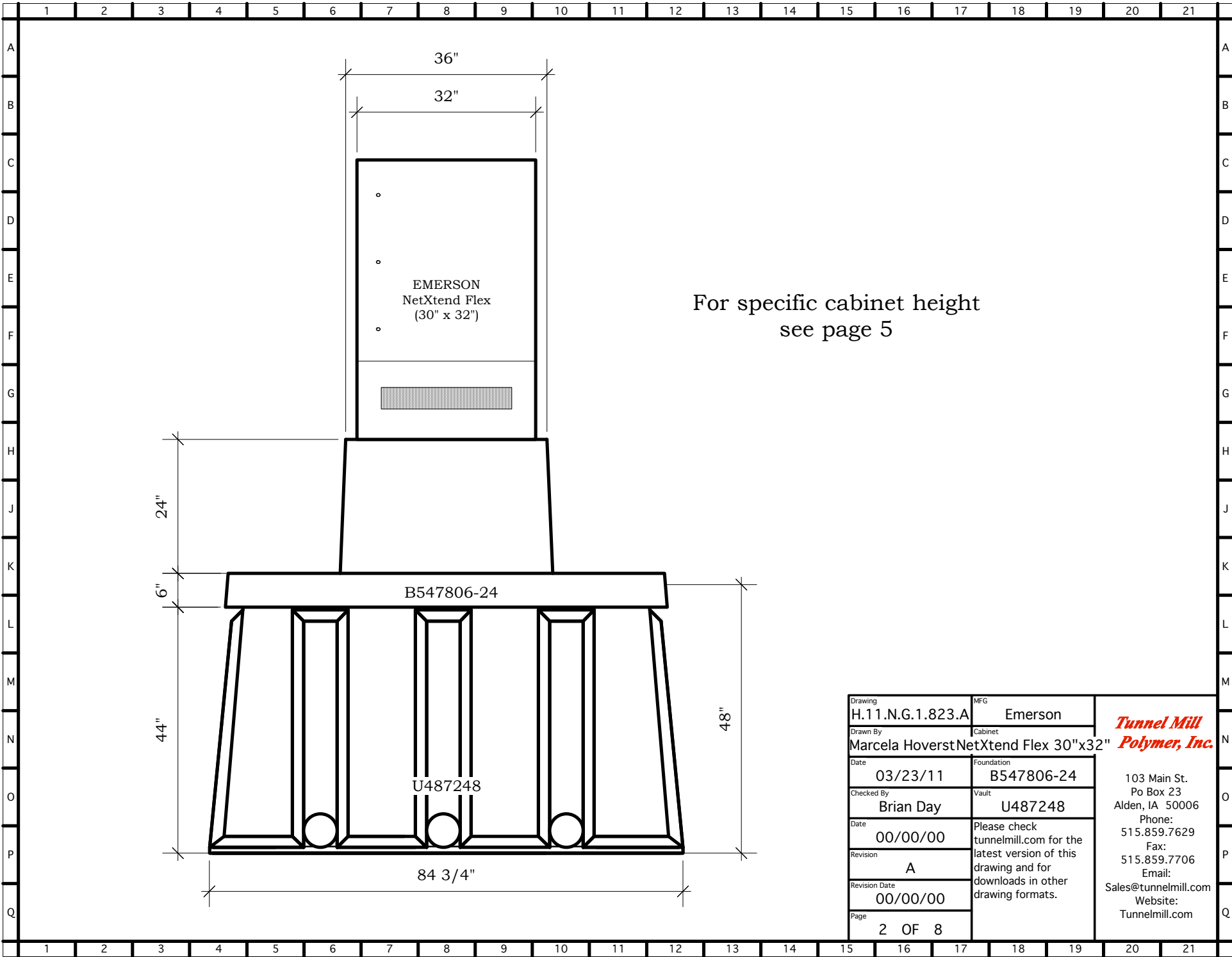


B547806-24

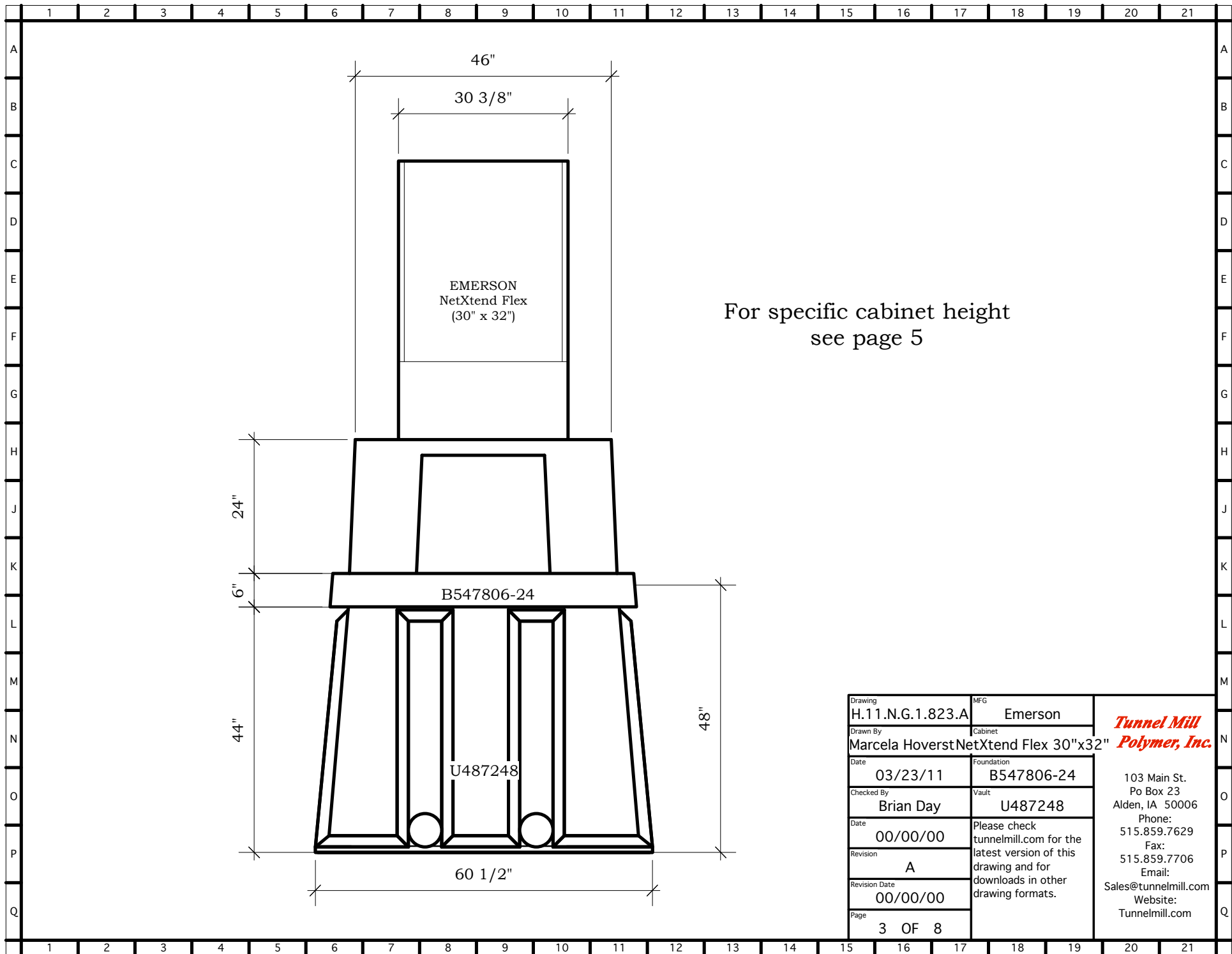
Drawing	H.11.N.G.1.823.A	MFG	Emerson	<i>Tunnel Mill Polymer, Inc.</i>
Drawn By	Marcela Hoverst	Cabinet	NetXtend Flex 30"x32"	
Date	03/23/11	Foundation	B547806-24	103 Main St. Po Box 23 Alden, IA 50006 Phone: 515.859.7629 Fax: 515.859.7706 Email: Sales@tunnelmill.com Website: Tunnelmill.com
Checked By	Brian Day	Vault	U487248	
Date	00/00/00	Please check tunnelmill.com for the latest version of this drawing and for downloads in other drawing formats.		
Revision	A			
Revision Date	00/00/00			
Page	1 OF 8			



For specific cabinet height
see page 5

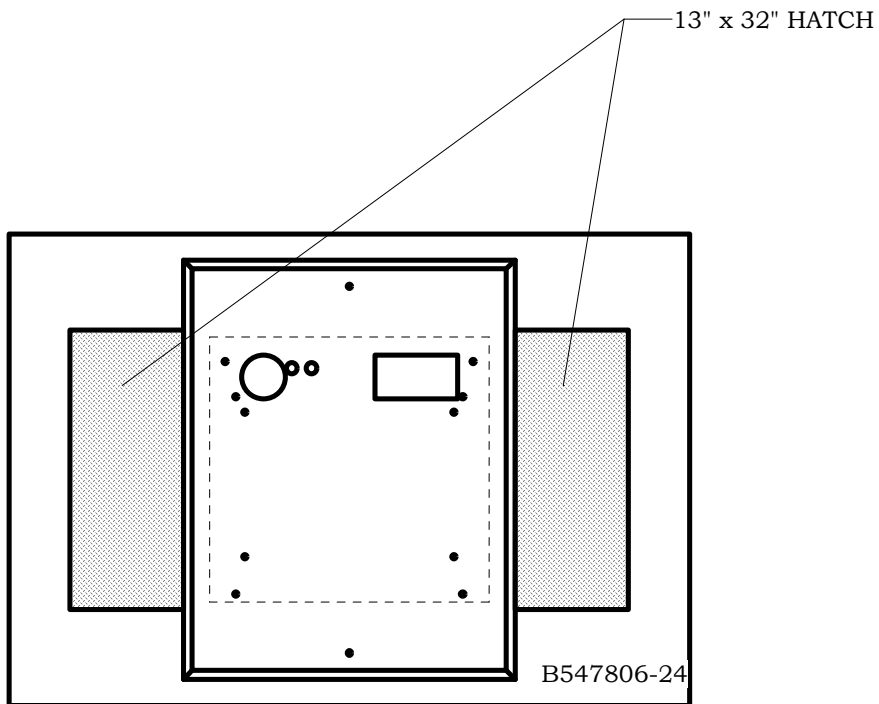
Drawing	H.11.N.G.1.823.A	MFG	Emerson
Drawn By	Marcela Hoverst	Cabinet	NetXtend Flex 30"x32"
Date	03/23/11	Foundation	B547806-24
Checked By	Brian Day	Vault	U487248
Date	00/00/00	Please check tunnelmill.com for the latest version of this drawing and for downloads in other drawing formats.	
Revision	A		
Revision Date	00/00/00		
Page	2 OF 8		

**Tunnel Mill
Polymer, Inc.**
103 Main St.
Po Box 23
Alden, IA 50006
Phone: 515.859.7629
Fax: 515.859.7706
Email: Sales@tunnelmill.com
Website: Tunnelmill.com



For specific cabinet height
see page 5

Drawing	H.11.N.G.1.823.A	MFG	Emerson	<i>Tunnel Mill Polymer, Inc.</i>
Drawn By	Marcela Hoverst	Cabinet	NetXtend Flex 30"x32"	
Date	03/23/11	Foundation	B547806-24	103 Main St. Po Box 23 Alden, IA 50006 Phone: 515.859.7629 Fax: 515.859.7706 Email: Sales@tunnelmill.com Website: Tunnelmill.com
Checked By	Brian Day	Vault	U487248	
Date	00/00/00	Please check tunnelmill.com for the latest version of this drawing and for downloads in other drawing formats.		
Revision	A			
Revision Date	00/00/00			
Page	3 OF 8			



Drawing	MFG	<i>Tunnel Mill Polymer, Inc.</i>
H.11.N.G.1.823.A	Emerson	
Drawn By	Cabinet	103 Main St. Po Box 23 Alden, IA 50006 Phone: 515.859.7629 Fax: 515.859.7706 Email: Sales@tunnelmill.com Website: Tunnelmill.com
Marcela HoverstNetXtend Flex 30"x32"		
Date	Foundation	
03/23/11	B547806-24	
Checked By	Vault	
Brian Day	U487248	
Date	Please check tunnelmill.com for the latest version of this drawing and for downloads in other drawing formats.	
00/00/00		
Revision		
A		
Revision Date		
00/00/00		
Page		
4 OF 8		

Emerson NetXtend dimension chart

footprint size	NetXtend Flex 8 Height w/Solar Shield + External Battery Base	NetXtend Flex 12 Height w/Solar Shield + External Battery Base	NetXtend Flex 17 Height w/Solar Shield + External Battery Base	NetXtend Flex 22 Height w/Solar Shield + External Battery Base	NetXtend Flex 27 Height w/Solar Shield + External Battery Base	NetXtend Flex 32
30" x 25"	38.78 in	41.51 in	50.26 in	61.57 in	70.32 in	65.07 in
30" x 32"	-	-	50.26 in	-	70.32 in	-
42" x 25"	-	41.51 in	50.26 in	-	70.32 in	-
42" x 46"	-	-	50.26 in	-	70.32 in	-
54" x 25"	-	-	-	-	70.32 in	-
72" x 32"	-	-	-	-	70.32 in	-
84" x 32"	-	-	-	-	70.32 in	-

Drawing H.11.N.G.1.823.A	MFG Emerson	<i>Tunnel Mill Polymer, Inc.</i> 103 Main St. Po Box 23 Alden, IA 50006 Phone: 515.859.7629 Fax: 515.859.7706 Email: Sales@tunnelmill.com Website: Tunnelmill.com
Drawn By Marcela Hoverst	Cabinet NetXtend Flex 30"x32"	
Date 03/23/11	Foundation B547806-24	
Checked By Brian Day	Vault U487248	
Date 00/00/00	Please check tunnelmill.com for the latest version of this drawing and for downloads in other drawing formats.	
Revision A		
Revision Date 00/00/00		
Page 5 OF 8		