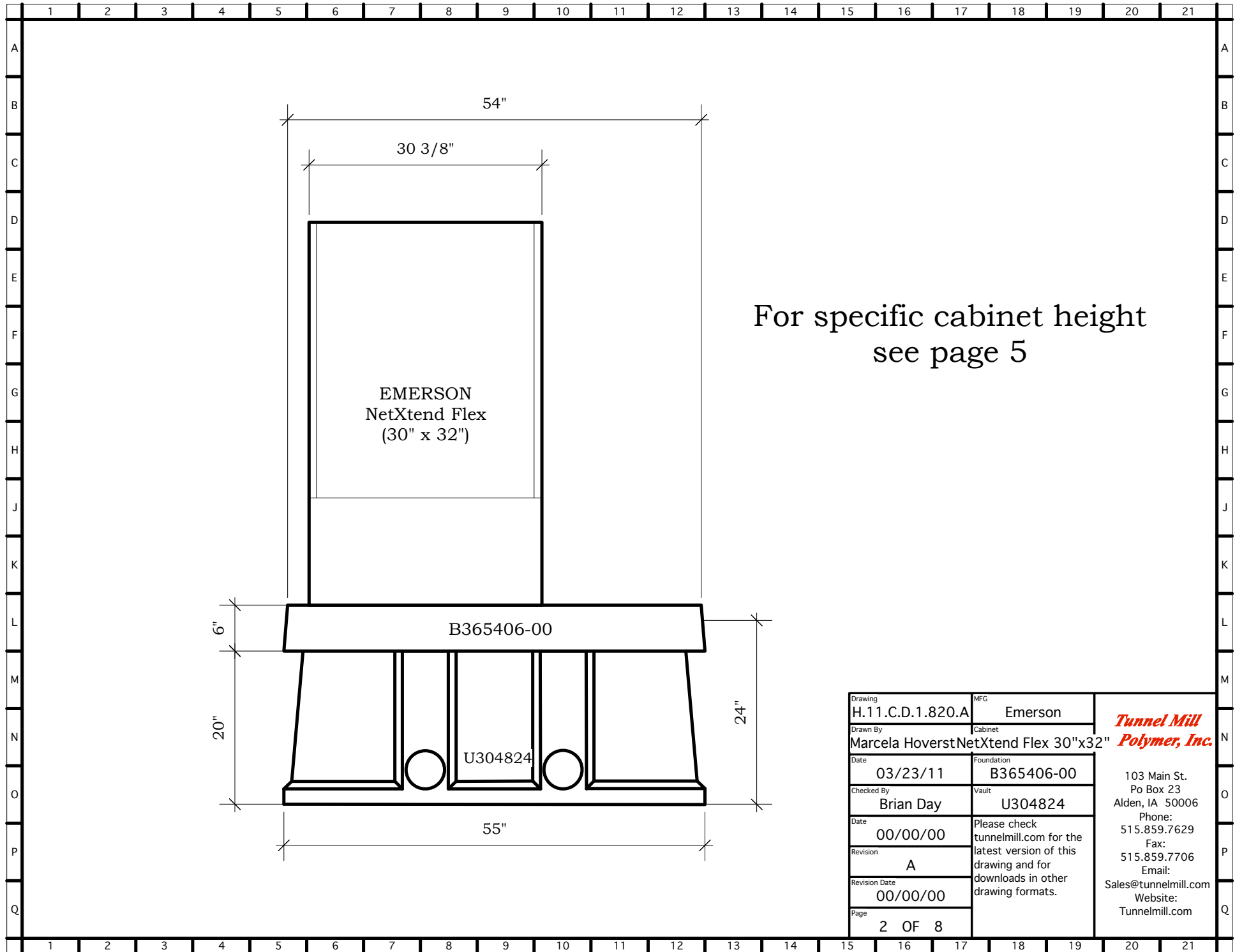
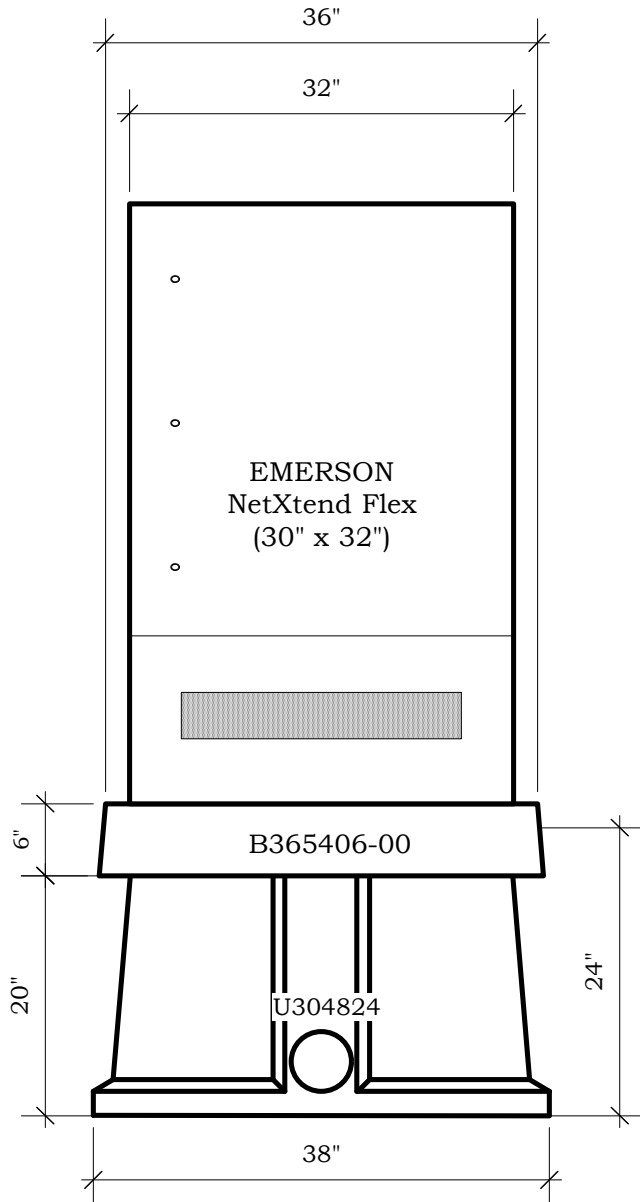


Drawing	H.11.C.D.1.820.A	MFG	Emerson	<i>Tunnel Mill Polymer, Inc.</i>
Drawn By	Marcela Hoverst	Cabinet	NetXtend Flex 30"x32"	
Date	03/23/11	Foundation	B365406-00	103 Main St. Po Box 23 Alden, IA 50006 Phone: 515.859.7629 Fax: 515.859.7706 Email: Sales@tunnelmill.com Website: Tunnelmill.com
Checked By	Brian Day	Vault	U304824	
Date	00/00/00	Please check tunnelmill.com for the latest version of this drawing and for downloads in other drawing formats.		
Revision	A			
Revision Date	00/00/00			
Page	1 OF 8			



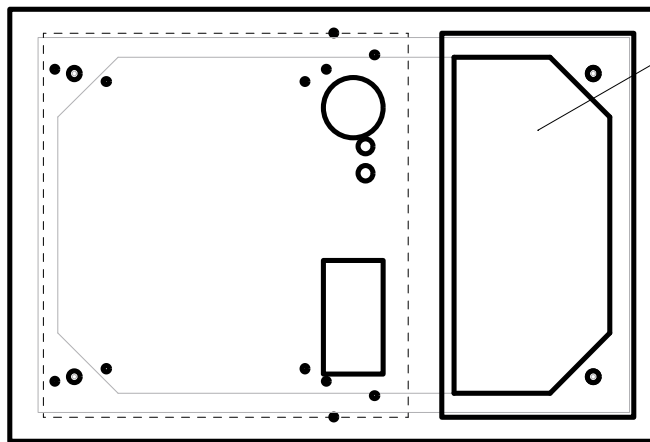
For specific cabinet height
see page 5

Drawing	H.11.C.D.1.820.A	MFG	Emerson	<i>Tunnel Mill Polymer, Inc.</i>
Drawn By	Marcela Hoverst	Cabinet	NetXtend Flex 30"x32"	
Date	03/23/11	Foundation	B365406-00	103 Main St. Po Box 23 Alden, IA 50006 Phone: 515.859.7629 Fax: 515.859.7706 Email: Sales@tunnelmill.com Website: Tunnelmill.com
Checked By	Brian Day	Vault	U304824	
Date	00/00/00	Please check tunnelmill.com for the latest version of this drawing and for downloads in other drawing formats.		
Revision	A			
Revision Date	00/00/00			
Page	2 OF 8			



For specific cabinet height
see page 5

Drawing	H.11.C.D.1.820.A	MFG	Emerson	<i>Tunnel Mill Polymer, Inc.</i>
Drawn By	Marcela Hoverst	Cabinet	NetXtend Flex 30"x32"	
Date	03/23/11	Foundation	B365406-00	103 Main St. Po Box 23 Alden, IA 50006 Phone: 515.859.7629 Fax: 515.859.7706 Email: Sales@tunnelmill.com Website: Tunnelmill.com
Checked By	Brian Day	Vault	U304824	
Date	00/00/00	Please check tunnelmill.com for the latest version of this drawing and for downloads in other drawing formats.		
Revision	A			
Revision Date	00/00/00			
Page	3 OF 8			



16" x 32" HATCH

Drawing	H.11.C.D.1.820.A	MFG	Emerson	<i>Tunnel Mill Polymer, Inc.</i>
Drawn By	Marcela Hoverst	Cabinet	NetXtend Flex 30"x32"	
Date	03/23/11	Foundation	B365406-00	103 Main St. Po Box 23 Alden, IA 50006 Phone: 515.859.7629 Fax: 515.859.7706 Email: Sales@tunnelmill.com Website: Tunnelmill.com
Checked By	Brian Day	Vault	U304824	
Date	00/00/00	Please check tunnelmill.com for the latest version of this drawing and for downloads in other drawing formats.		
Revision	A			
Revision Date	00/00/00			
Page	4 OF 8			

Emerson NetXtend dimension chart

footprint size	NetXtend Flex 8 Height w/Solar Shield + External Battery Base	NetXtend Flex 12 Height w/Solar Shield + External Battery Base	NetXtend Flex 17 Height w/Solar Shield + External Battery Base	NetXtend Flex 22 Height w/Solar Shield + External Battery Base	NetXtend Flex 27 Height w/Solar Shield + External Battery Base	NetXtend Flex 32
30" x 25"	38.78 in	41.51 in	50.26 in	61.57 in	70.32 in	65.07 in
30" x 32"	-	-	50.26 in	-	70.32 in	-
42" x 25"	-	41.51 in	50.26 in	-	70.32 in	-
42" x 46"	-	-	50.26 in	-	70.32 in	-
54" x 25"	-	-	-	-	70.32 in	-
72" x 32"	-	-	-	-	70.32 in	-
84" x 32"	-	-	-	-	70.32 in	-

Drawing	MFG	<i>Tunnel Mill Polymer, Inc.</i> 103 Main St. Po Box 23 Alden, IA 50006 Phone: 515.859.7629 Fax: 515.859.7706 Email: Sales@tunnelmill.com Website: Tunnelmill.com
H.11.C.D.1.820.A	Emerson	
Drawn By	Cabinet	
Marcela Hoverst	NetXtend Flex 30"x32"	
Date	Foundation	
03/23/11	B365406-00	
Checked By	Vault	
Brian Day	U304824	
Date	Please check tunnelmill.com for the latest version of this drawing and for downloads in other drawing formats.	
00/00/00		
Revision		
A		
Revision Date		
00/00/00		
Page		
5 OF 8		