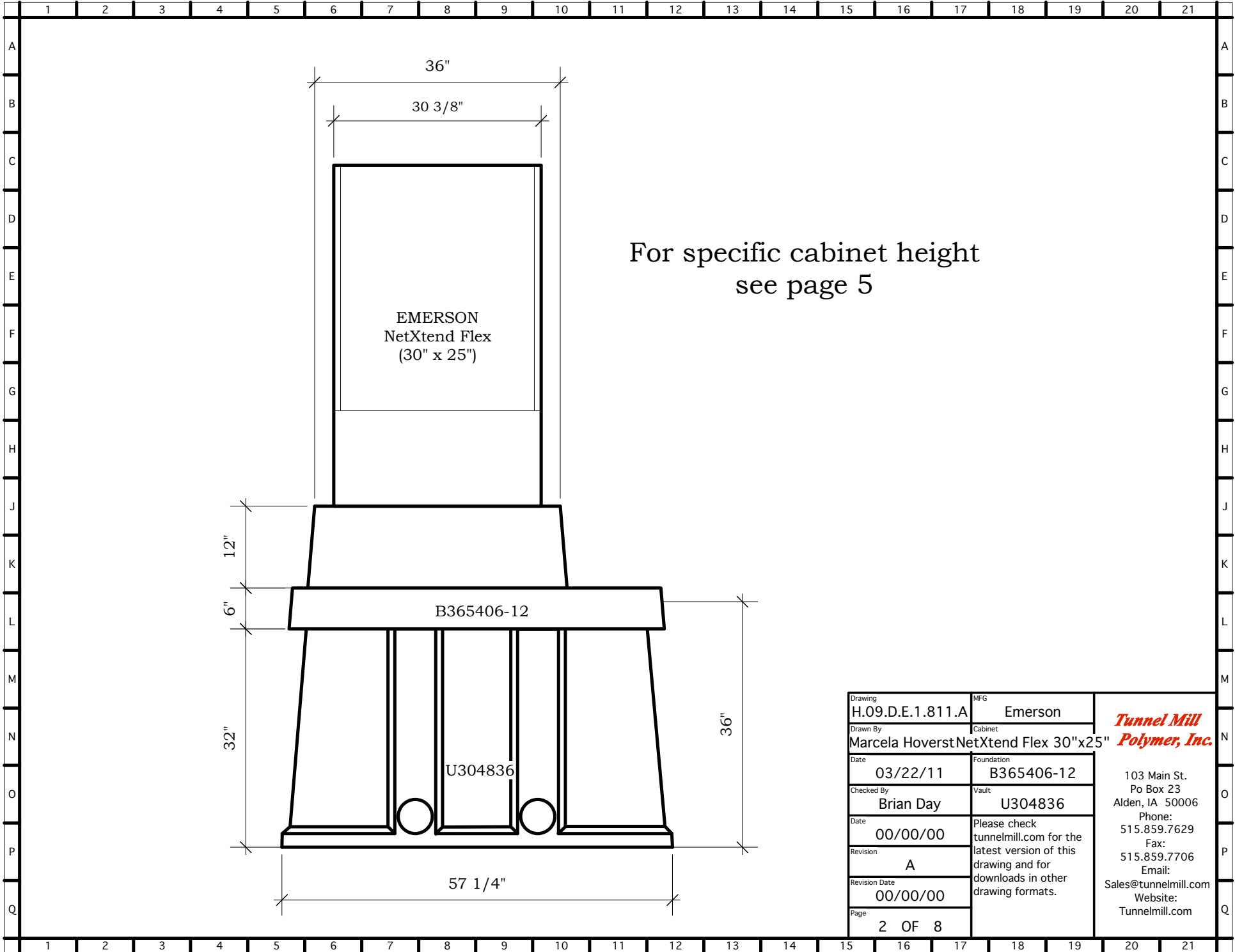
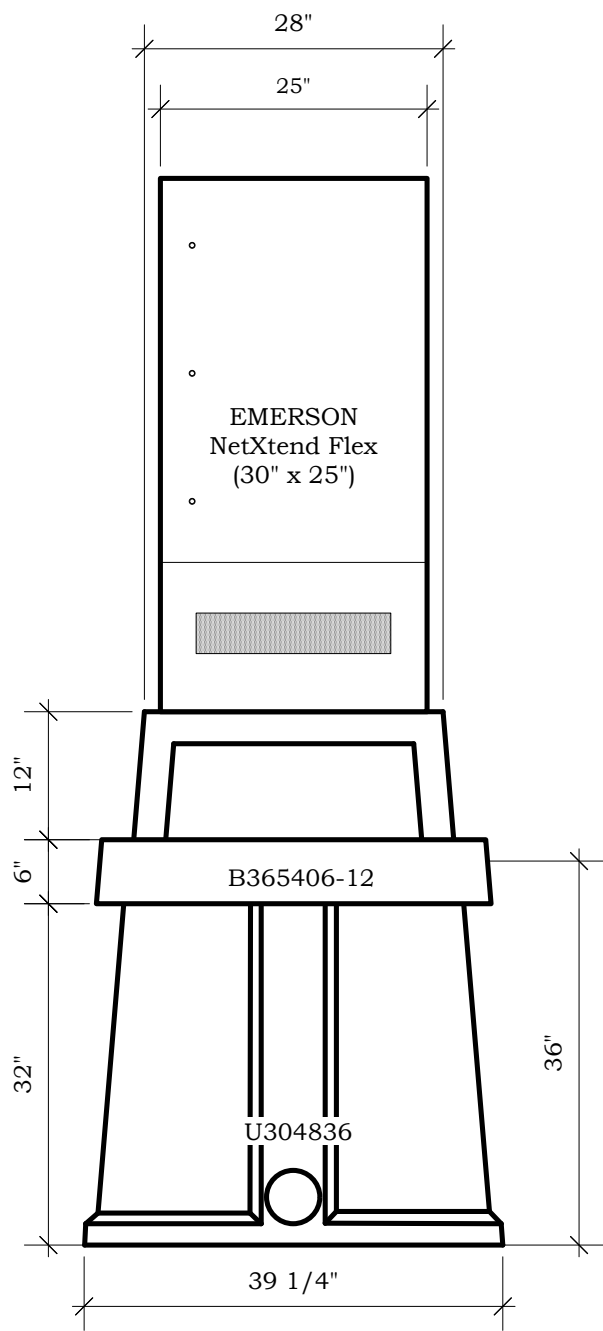


Drawing	H.09.D.E.1.811.A	MFG	Emerson	<b><i>Tunnel Mill Polymer, Inc.</i></b>
Drawn By	Marcela Hoverst	Cabinet	NetXtend Flex 30"x25"	
Date	03/22/11	Foundation	B365406-12	103 Main St. Po Box 23 Alden, IA 50006 Phone: 515.859.7629 Fax: 515.859.7706 Email: Sales@tunnelmill.com Website: Tunnelmill.com
Checked By	Brian Day	Vault	U304836	
Date	00/00/00	Please check tunnelmill.com for the latest version of this drawing and for downloads in other drawing formats.		
Revision	A			
Revision Date	00/00/00			
Page	1 OF 8			



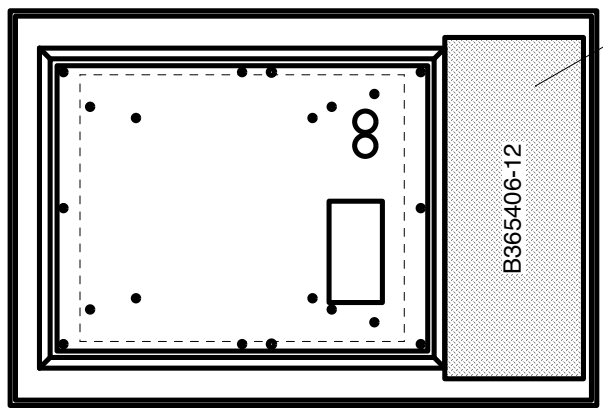
For specific cabinet height  
see page 5

Drawing	H.09.D.E.1.811.A	MFG	Emerson	<b><i>Tunnel Mill Polymer, Inc.</i></b>
Drawn By	Marcela Hoverst	Cabinet	NetXtend Flex 30"x25"	
Date	03/22/11	Foundation	B365406-12	103 Main St. Po Box 23 Alden, IA 50006 Phone: 515.859.7629 Fax: 515.859.7706 Email: Sales@tunnelmill.com Website: Tunnelmill.com
Checked By	Brian Day	Vault	U304836	
Date	00/00/00	Please check tunnelmill.com for the latest version of this drawing and for downloads in other drawing formats.		
Revision	A			
Revision Date	00/00/00			
Page	2 OF 8			



For specific cabinet height  
see page 5

Drawing	H.09.D.E.1.811.A	MFG	Emerson	<b><i>Tunnel Mill Polymer, Inc.</i></b>
Drawn By	Marcela Hoverst	Cabinet	NetXtend Flex 30"x25"	
Date	03/22/11	Foundation	B365406-12	103 Main St. Po Box 23 Alden, IA 50006 Phone: 515.859.7629 Fax: 515.859.7706 Email: Sales@tunnelmill.com Website: Tunnelmill.com
Checked By	Brian Day	Vault	U304836	
Date	00/00/00	Please check tunnelmill.com for the latest version of this drawing and for downloads in other drawing formats.		
Revision	A			
Revision Date	00/00/00			
Page	3 OF 8			



13" x 32" HATCH

B365406-12

Drawing	H.09.D.E.1.811.A	MFG	Emerson	<b><i>Tunnel Mill Polymer, Inc.</i></b> 103 Main St. Po Box 23 Alden, IA 50006 Phone: 515.859.7629 Fax: 515.859.7706 Email: Sales@tunnelmill.com Website: Tunnelmill.com
Drawn By	Marcela Hoverst	Cabinet	NetXtend Flex 30"x25"	
Date	03/22/11	Foundation	B365406-12	
Checked By	Brian Day	Vault	U304836	
Date	00/00/00	Please check tunnelmill.com for the latest version of this drawing and for downloads in other drawing formats.		
Revision	A			
Revision Date	00/00/00			
Page	4 OF 8			

## Emerson NetXtend dimension chart

footprint size	NetXtend Flex 8 Height w/Solar Shield + External Battery Base	NetXtend Flex 12 Height w/Solar Shield + External Battery Base	NetXtend Flex 17 Height w/Solar Shield + External Battery Base	NetXtend Flex 22 Height w/Solar Shield + External Battery Base	NetXtend Flex 27 Height w/Solar Shield + External Battery Base	NetXtend Flex 32
<b>30" x 25"</b>	38.78 in	41.51 in	50.26 in	61.57 in	70.32 in	65.07 in
<b>30" x 32"</b>	-	-	50.26 in	-	70.32 in	-
<b>42" x 25"</b>	-	41.51 in	50.26 in	-	70.32 in	-
<b>42" x 46"</b>	-	-	50.26 in	-	70.32 in	-
<b>54" x 25"</b>	-	-	-	-	70.32 in	-
<b>72" x 32"</b>	-	-	-	-	70.32 in	-
<b>84" x 32"</b>	-	-	-	-	70.32 in	-

Drawing	MFG	<p style="text-align: center;"><b><i>Tunnel Mill Polymer, Inc.</i></b></p> <p>103 Main St. Po Box 23 Alden, IA 50006 Phone: 515.859.7629 Fax: 515.859.7706 Email: Sales@tunnelmill.com Website: Tunnelmill.com</p>
H.09.D.E.1.811.A	Emerson	
Drawn By	Cabinet	
Marcela Hoverst	NetXtend Flex 30"x25"	
Date	Foundation	
03/22/11	B365406-12	
Checked By	Vault	
Brian Day	U304836	
Date	Please check tunnelmill.com for the latest version of this drawing and for downloads in other drawing formats.	
00/00/00		
Revision		
A		
Revision Date		
00/00/00		
Page		
5 OF 8		