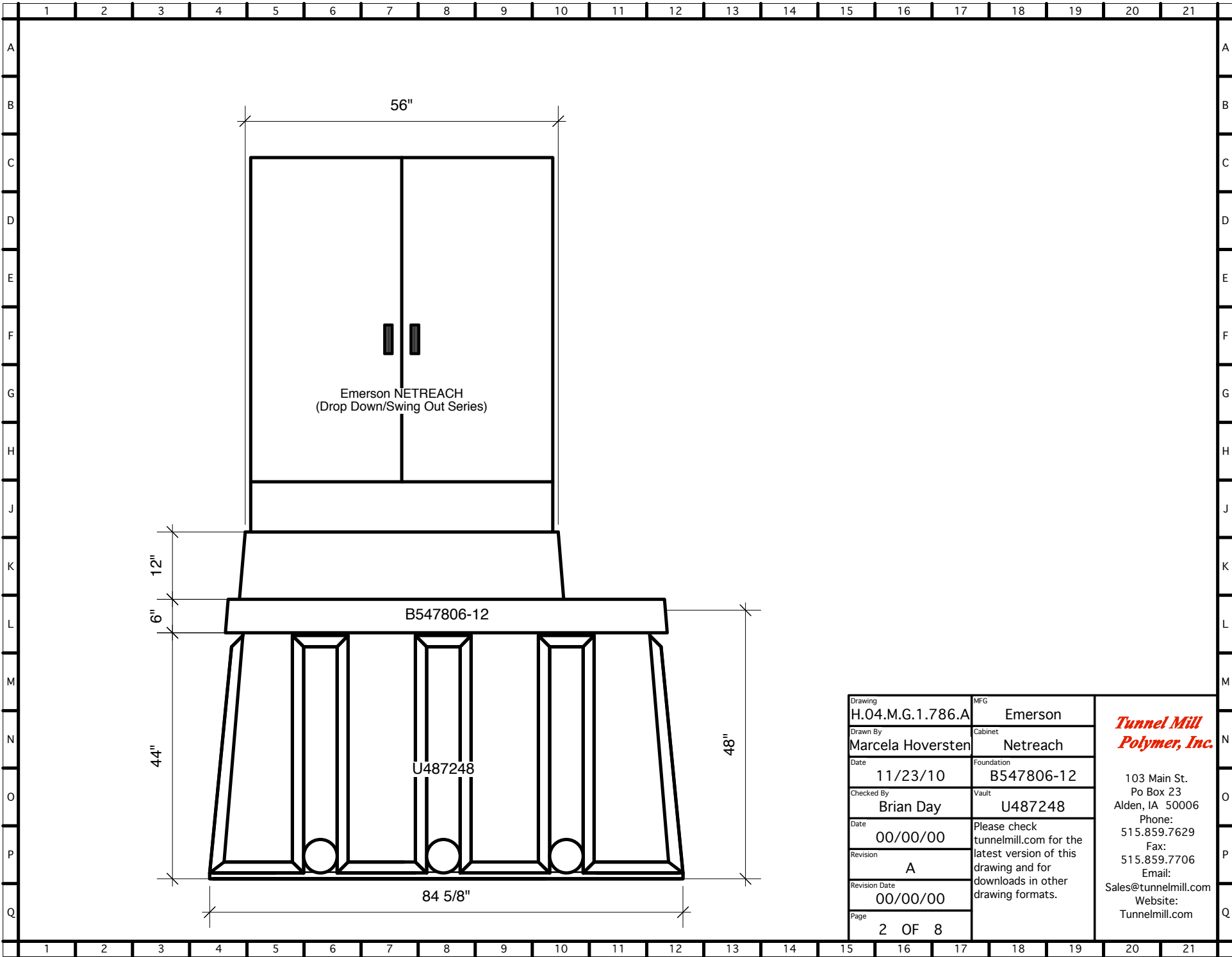


Drawing	H.04.M.G.1.786.A	MFG	Emerson	<i>Tunnel Mill Polymer, Inc.</i> 103 Main St. Po Box 23 Alden, IA 50006 Phone: 515.859.7629 Fax: 515.859.7706 Email: Sales@tunnelmill.com Website: Tunnelmill.com
Drawn By	Marcela Hoversten	Cabinet	Netreach	
Date	11/23/10	Foundation	B547806-12	
Checked By	Brian Day	Vault	U487248	
Date	00/00/00	Please check tunnelmill.com for the latest version of this drawing and for downloads in other drawing formats.		
Revision	A			
Revision Date	00/00/00			
Page	1 OF 8			



Emerson NETREACH
(Drop Down/Swing Out Series)

B547806-12

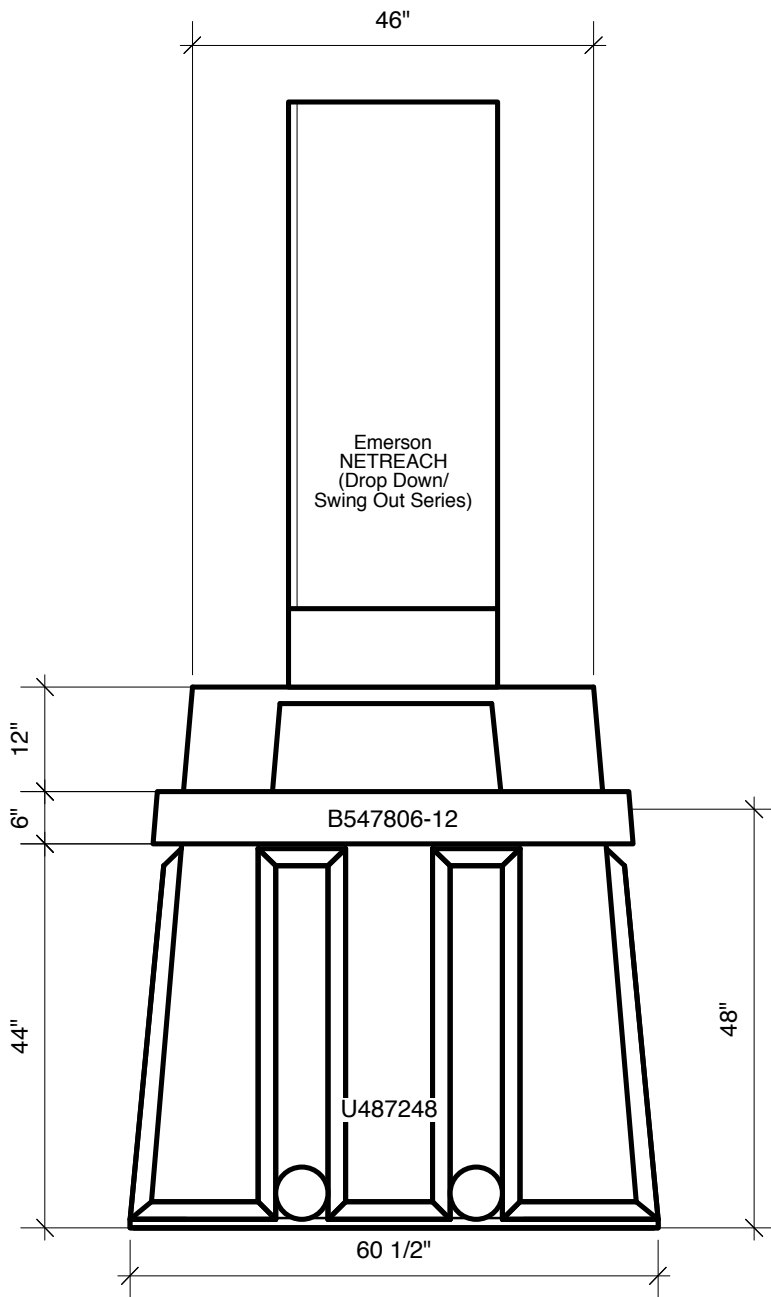
U487248

84 5/8"

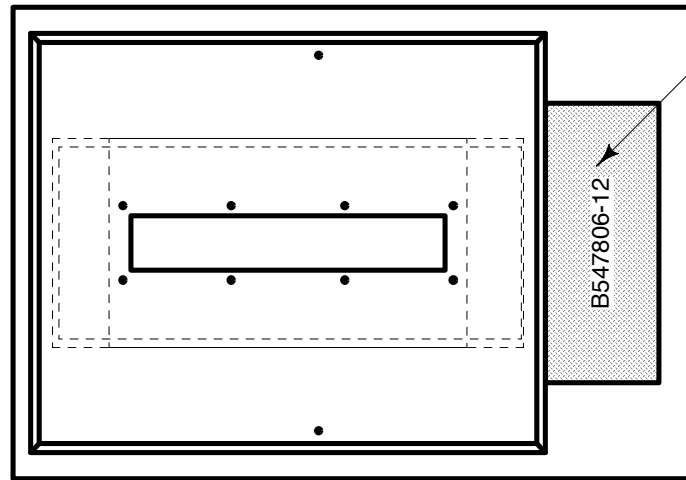
Drawing	H.04.M.G.1.786.A	MFG	Emerson
Drawn By	Marcela Hoversten	Cabinet	Netreach
Date	11/23/10	Foundation	B547806-12
Checked By	Brian Day	Vault	U487248
Date	00/00/00	Please check tunnelmill.com for the latest version of this drawing and for downloads in other drawing formats.	
Revision	A		
Revision Date	00/00/00		
Page	2 OF 8		

***Tunnel Mill
Polymer, Inc.***

103 Main St.
Po Box 23
Alden, IA 50006
Phone: 515.859.7629
Fax: 515.859.7706
Email: Sales@tunnelmill.com
Website: Tunnelmill.com



Drawing	H.04.M.G.1.786.A	MFG	Emerson	<i>Tunnel Mill Polymer, Inc.</i> 103 Main St. Po Box 23 Alden, IA 50006 Phone: 515.859.7629 Fax: 515.859.7706 Email: Sales@tunnelmill.com Website: Tunnelmill.com
Drawn By	Marcela Hoversten	Cabinet	Netreach	
Date	11/23/10	Foundation	B547806-12	
Checked By	Brian Day	Vault	U487248	
Date	00/00/00	Please check tunnelmill.com for the latest version of this drawing and for downloads in other drawing formats.		
Revision	A			
Revision Date	00/00/00			
Page	3 OF 8			



13" x 32" HATCH

B547806-12

Drawing	H.04.M.G.1.786.A	MFG	Emerson	<i>Tunnel Mill Polymer, Inc.</i> 103 Main St. Po Box 23 Alden, IA 50006 Phone: 515.859.7629 Fax: 515.859.7706 Email: Sales@tunnelmill.com Website: Tunnelmill.com
Drawn By	Marcela Hoversten	Cabinet	Netreach	
Date	11/23/10	Foundation	B547806-12	
Checked By	Brian Day	Vault	U487248	
Date	00/00/00	Please check tunnelmill.com for the latest version of this drawing and for downloads in other drawing formats.		
Revision	A			
Revision Date	00/00/00			
Page	4 OF 8			

Emerson Netreach (Integrated Cross Connect Solutions)

<i>DROP DOWN SERIES</i>			
<i>cabinet</i>	<i>H</i>	<i>W</i>	<i>D</i>
<i>1-600 Pair Count Single Access</i>	50	15	14
<i>700-1200 Pair Count Single Access</i>	38"	44"	24
<i>1300-1800 Pair Count Single Access</i>	50	44"	24
<i>1900-2700 Pair Count Single Access</i>	67	44"	24
<i>Low Profile 2700 Pair Count Single Access</i>	50	67	24
<i>Long Base 2800-4050 Pair Count Single Access</i>	67	67	24
<i>700-1200 Pair Count Double Access</i>	50	15	14
<i>1300-2400 Pair Count Double Access</i>	38	44	24
<i>2500-3600 Pair Count Double Access</i>	50	44	24
<i>3700-5400 Pair Count Double Access</i>	70	44	24
<i>Low Profile 5400 Pair Count Double Access</i>	50	67	24
<i>Long Base 4100-8100 Pair Count Double Access</i>	67	67	24
<i>SWING OUT SERIES</i>			
<i>cabinet</i>	<i>H</i>	<i>W</i>	<i>D</i>
<i>600-1200 Pair Count Single Access</i>	47	41	24
<i>1300-1800 Pair Count Single Access</i>	50	54	24
<i>1900-2700 Pair Count Single Access</i>	75	53	22
<i>1200-2400 Pair Count Double Access</i>	47	41	24
<i>1800-3600 Pair Count Double Access</i>	50	54	24
<i>2700-5400 Pair Count Double Access</i>	75	53	22

<small>Drawing</small> H.04.M.G.1.786.A	<small>MFG</small> Emerson	<p><i>Tunnel Mill Polymer, Inc.</i></p> <p>103 Main St. Po Box 23 Alden, IA 50006 Phone: 515.859.7629 Fax: 515.859.7706 Email: Sales@tunnelmill.com Website: Tunnelmill.com</p>
<small>Drawn By</small> Marcela Hoversten	<small>Cabinet</small> Netreach	
<small>Date</small> 11/23/10	<small>Foundation</small> B547806-12	
<small>Checked By</small> Brian Day	<small>Vault</small> U487248	
<small>Date</small> 00/00/00	<small>Please check tunnelmill.com for the latest version of this drawing and for downloads in other drawing formats.</small>	
<small>Revision</small> A		
<small>Revision Date</small> 00/00/00		
<small>Page</small> 5 OF 8		