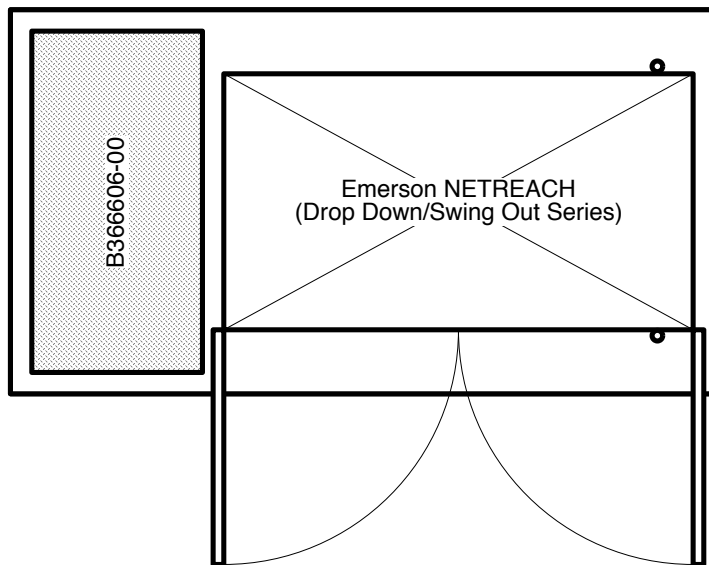
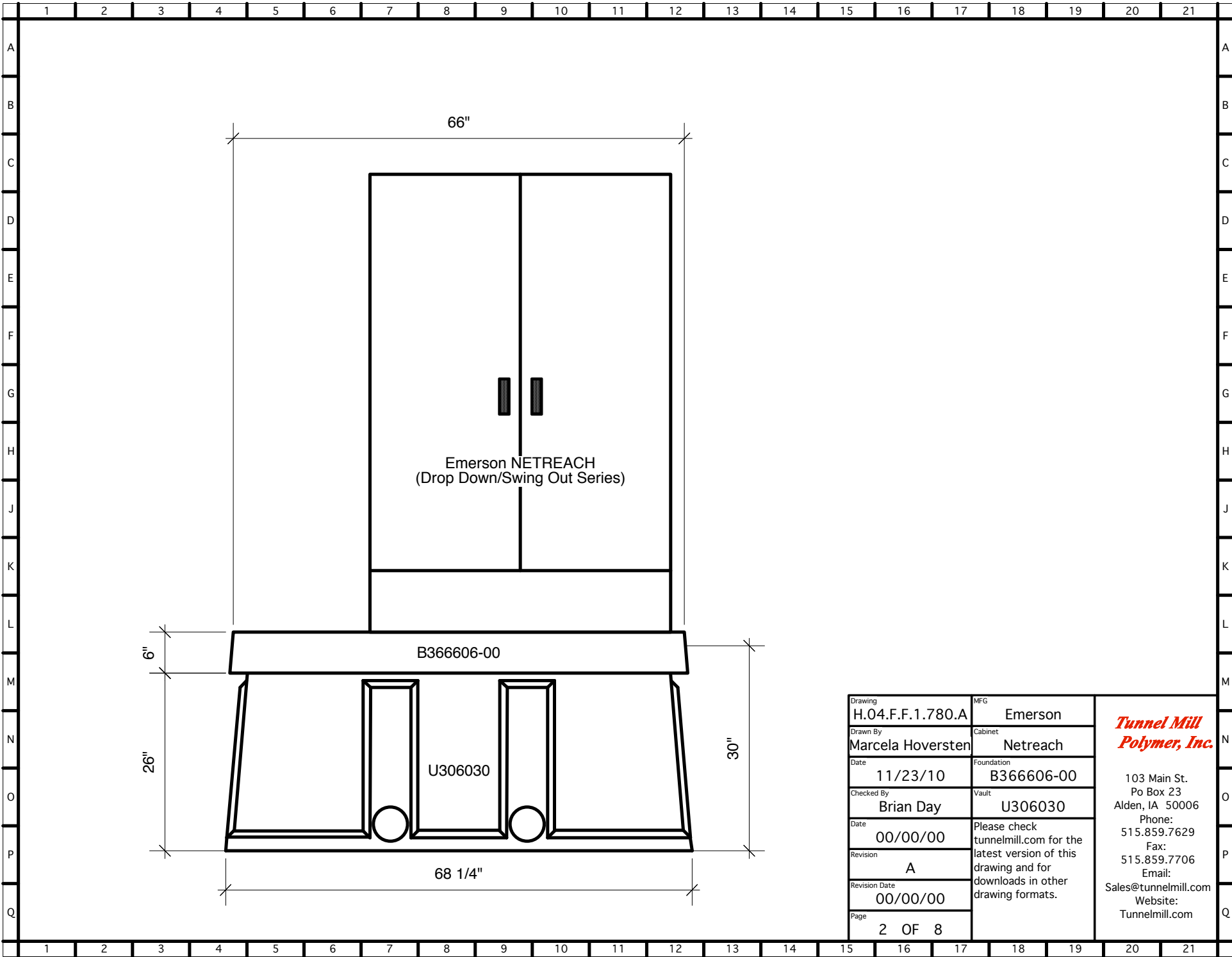


**Don't use this foundation for  
Swing Out Series  
1300-1800 and 1900-2700 Pair Count Single Access and  
1800-3600 and 2700-5400 Pair Count Double Access.**



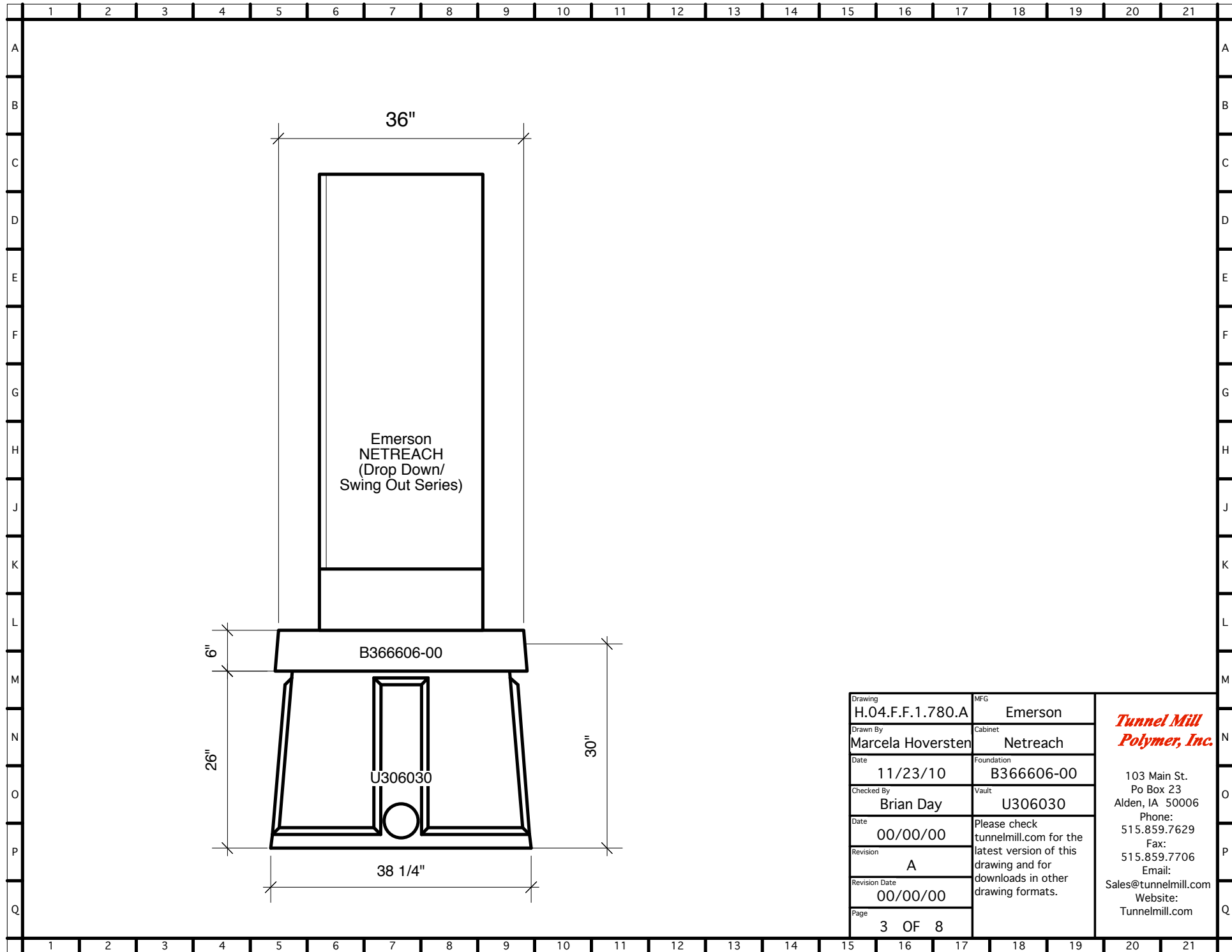
Drawing	H.04.F.F.1.780.A	MFG	Emerson	<p align="center"><b><i>Tunnel Mill Polymer, Inc.</i></b></p> <p align="center">103 Main St. Po Box 23 Alden, IA 50006 Phone: 515.859.7629 Fax: 515.859.7706 Email: Sales@tunnelmill.com Website: Tunnelmill.com</p>
Drawn By	Marcela Hoversten	Cabinet	Netreach	
Date	11/23/10	Foundation	B366606-00	
Checked By	Brian Day	Vault	U306030	
Date	00/00/00	Please check tunnelmill.com for the latest version of this drawing and for downloads in other drawing formats.		
Revision	A			
Revision Date	00/00/00			
Page	1 OF 8			



Drawing	H.04.F.F.1.780.A	MFG	Emerson
Drawn By	Marcela Hoversten	Cabinet	Netreach
Date	11/23/10	Foundation	B366606-00
Checked By	Brian Day	Vault	U306030
Date	00/00/00	Please check tunnelmill.com for the latest version of this drawing and for downloads in other drawing formats.	
Revision	A		
Revision Date	00/00/00		
Page	2 OF 8		

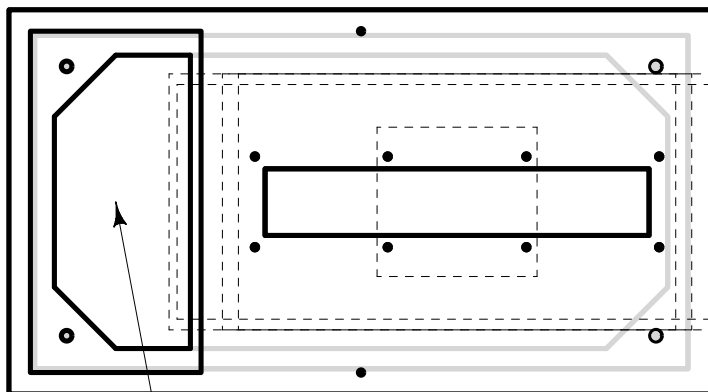
***Tunnel Mill  
Polymer, Inc.***

103 Main St.  
Po Box 23  
Alden, IA 50006  
Phone: 515.859.7629  
Fax: 515.859.7706  
Email: Sales@tunnelmill.com  
Website: Tunnelmill.com



Drawing	H.04.F.F.1.780.A	MFG	Emerson	<b><i>Tunnel Mill Polymer, Inc.</i></b>  103 Main St. Po Box 23 Alden, IA 50006 Phone: 515.859.7629 Fax: 515.859.7706 Email: Sales@tunnelmill.com Website: Tunnelmill.com
Drawn By	Marcela Hoversten	Cabinet	Netreach	
Date	11/23/10	Foundation	B366606-00	
Checked By	Brian Day	Vault	U306030	
Date	00/00/00	Please check tunnelmill.com for the latest version of this drawing and for downloads in other drawing formats.		
Revision	A			
Revision Date	00/00/00			
Page	3 OF 8			

**Don't use this foundation for  
Swing Out Series  
1300-1800 and 1900-2700 Pair Count Single Access and  
1800-3600 and 2700-5400 Pair Count Double Access.**



16" x 32" HATCH

Drawing <b>H.04.F.F.1.780.A</b>	MFG <b>Emerson</b>	<p><b><i>Tunnel Mill Polymer, Inc.</i></b></p> <p>103 Main St. Po Box 23 Alden, IA 50006 Phone: 515.859.7629 Fax: 515.859.7706 Email: Sales@tunnelmill.com Website: Tunnelmill.com</p>
Drawn By <b>Marcela Hoversten</b>	Cabinet <b>Netreach</b>	
Date <b>11/23/10</b>	Foundation <b>B366606-00</b>	
Checked By <b>Brian Day</b>	Vault <b>U306030</b>	
Date <b>00/00/00</b>	Please check tunnelmill.com for the latest version of this drawing and for downloads in other drawing formats.	
Revision <b>A</b>		
Revision Date <b>00/00/00</b>		
Page <b>4 OF 8</b>		

## *Emerson Netreach (Integrated Cross Connect Solutions)*

<b>DROP DOWN SERIES</b>			
<i>cabinet</i>	<i>H</i>	<i>W</i>	<i>D</i>
<i>1-600 Pair Count Single Access</i>	50	15	14
<i>700-1200 Pair Count Single Access</i>	38"	44"	24
<i>1300-1800 Pair Count Single Access</i>	50	44"	24
<i>1900-2700 Pair Count Single Access</i>	67	44"	24
<i>Low Profile 2700 Pair Count Single Access</i>	50	67	24
<i>Long Base 2800-4050 Pair Count Single Access</i>	67	67	24
<i>700-1200 Pair Count Double Access</i>	50	15	14
<i>1300-2400 Pair Count Double Access</i>	38	44	24
<i>2500-3600 Pair Count Double Access</i>	50	44	24
<i>3700-5400 Pair Count Double Access</i>	70	44	24
<i>Low Profile 5400 Pair Count Double Access</i>	50	67	24
<i>Long Base 4100-8100 Pair Count Double Access</i>	67	67	24
<b>SWING OUT SERIES</b>			
<i>cabinet</i>	<i>H</i>	<i>W</i>	<i>D</i>
<i>600-1200 Pair Count Single Access</i>	47	41	24
<i>1300-1800 Pair Count Single Access</i>	50	54	24
<i>1900-2700 Pair Count Single Access</i>	75	53	22
<i>1200-2400 Pair Count Double Access</i>	47	41	24
<i>1800-3600 Pair Count Double Access</i>	50	54	24
<i>2700-5400 Pair Count Double Access</i>	75	53	22

Drawing	MFG	<p><b><i>Tunnel Mill Polymer, Inc.</i></b></p> <p>103 Main St. Po Box 23 Alden, IA 50006 Phone: 515.859.7629 Fax: 515.859.7706 Email: Sales@tunnelmill.com Website: Tunnelmill.com</p>
H.04.F.F.1.780.A	Emerson	
Drawn By	Cabinet	
Marcela Hoversten	Netreach	
Date	Foundation	
11/23/10	B366606-00	
Checked By	Vault	
Brian Day	U306030	
Date	Please check tunnelmill.com for the latest version of this drawing and for downloads in other drawing formats.	
00/00/00		
Revision		
A		
Revision Date		
00/00/00		
Page		
5 OF 8		